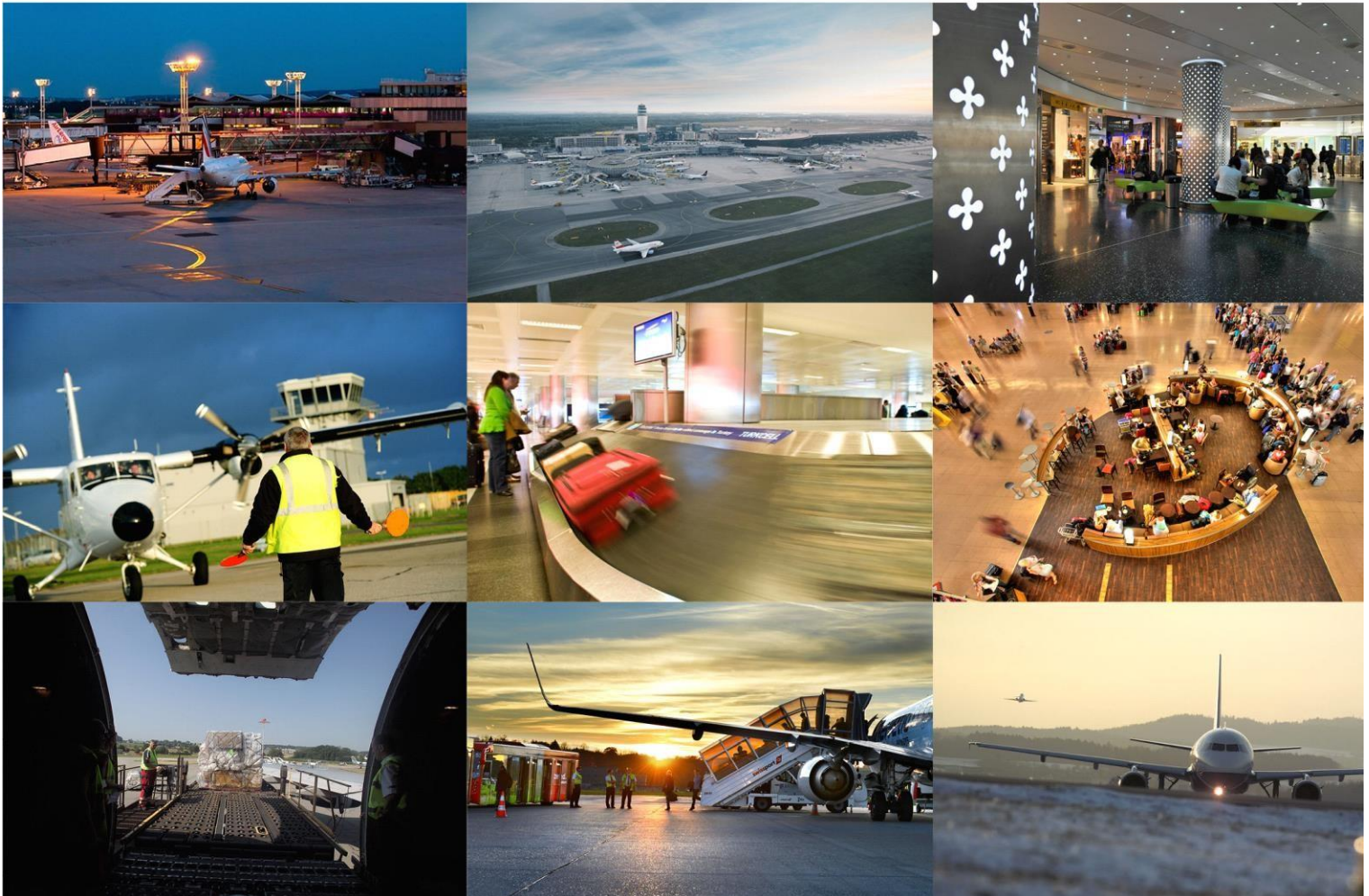




ACI EUROPE AIRPORT TRAFFIC REPORT

SOURCE: ACI WORLD & ACI EUROPE

Март и первый квартал 2017



Устойчивый рост пассажирских и грузовых перевозок в европейских аэропортах в первом квартале

Брюссель, 8 мая 2017 года: Торговая организация европейского аэропорта, ACI EUROPE опубликовала сегодня свой отчет о воздушном трафике за март и **первый квартал 2017 года**. Этот отчет только о воздушном транспорте, который включает в себя все виды пассажирских рейсов авиакомпании, стоимость предоставляемых услуг, расписание рейсов и прочее. Данный отчет показывает, что в первом квартале этого года **трафик пассажирских перевозок** в аэропортах Европы вырос в среднем на **+6.9%**.

ЕВРОПЕЙСКИЕ АЭРОПОРТЫ ПО-ПРЕЖНЕМУ ЛИДИРУЮТ

Говоря более конкретно, рынок Европейского Союза сохранил динамическую траекторию роста с увеличением пассажиропотока на **+7.2%** в течении первого квартала этого года. Внутри самого Европейского Союза 11 национальных рынков зафиксировали двузначные темпы роста – в основном в Восточной части блока наряду с Кипром, Люксембургом, Мальтой и Португалией.

Соответственно, многие аэропорты опубликовали впечатляющие результаты: Клуж (+60.1%), София (+46.9%), Варшавский аэропорт имени Фредерика Шопена (+28.5%), Ларнка (+26.9%), Мальта (+22.1%), Международный аэропорт имени Анри Коанды (+21.4%), Лиссабон (+21.2%), Порту (+19.9%), Краков (+19.1%), Прага (+18.8%), Таллинн (+18.3%), Любляна (+17.5%), Будапешт (+14.5%), Вильнюс (+14.4%) и Люксембург (+13.5%).

НЕЕВРОПЕЙСКИЕ АЭРОПОРТЫ ДОГОНЯЮТ

Тем временем объем пассажирских перевозок в странах, **не входящих в Европейский Союз**, рос медленнее, но, тем не менее, постепенно увеличивался в первом квартале – на **+5.9%**. В результате чего, неевропейский рынок показал в марте лучшие результаты по сравнению с рынком ЕС (+7.4% против +6.4%). Это улучшение было обусловлено увеличением объемов в аэропортах России, Украины и Норвегии, а также турецких аэропортов в марте, которые испытывают почти нулевой рост (-0,3%) после месяцев убытков.

Следующие аэропорты показали лучшие результаты среди неевропейских аэропортов за первый квартал 2017 года: Кефлавик (+53.7%), Ростов (+38.6%), Киев-Борисполь (+32.2%), Новосибирск (+27.8%), Санкт-Петербург (+26.8%), Екатеринбург (+20.9%), Москва-Шереметьево (+16.8%) и Самара (+15.6%).

Ведущие (топ-5 европейских аэропортов), в первом квартале этого года наблюдают увеличение пассажиропотока на **+1.9%** (по сравнению со средним увеличением на +1.5% в 2016 году). Амстердам-Схипхол сохранил лидирующие позиции в плане роста (+ 8,6%), за ним следуют Париж - Шарль-де-Голль (+ 4,3%), Лондон-Хитроу (+ 2,2%) и Франкфурт (+ 1,5%). С потерями почти в 900,000 пассажиров (-7%), Стамбул-Ататюрк сильно выделяется на фоне этих аэропортов.



Грузовые перевозки по европейской сети аэропортов заметно улучшились в первом квартале 2017 года на +8%, а в марте можно наблюдать лучший месячный показатель с апреля 2011 года (+ 13.7%). **Движения воздушных судов** выросли на **+3.0%**.

Генеральный директор ACI EUROPE Оливьер Янковец, сказал: "Импульс для роста трафика держится и вполне может продолжить это делать в ближайшие месяцы. Риск повышения политической нестабильности в Европейском Союзе только что отступил с результатами первого тура президентских выборов во Франции - очень положительный фактор для нашей отрасли. Возвращение динамики роста грузовых перевозок отражает увеличение роста торговли, предпринимательского доверия и тот факт, что другие ведущие индикаторы показывают, что экономика находится на подъеме, особенно в Евроне".

Он добавил: "Однако мы должны быть осторожны в нашем оптимизме, учитывая, что обширная геополитическая среда продолжает оставаться более нестабильной, чем когда-либо. Текущая неопределенность в отношении последствий Брексита для авиации вряд ли будет решена быстро - и это может в конечном итоге ограничить рост пропускной способности авиакомпаний и возможности развития сети в некоторых аэропортах, особенно в Великобритании".

В течение **первого квартала 2017 года**, аэропорты, принимающие более чем 25 миллионов пассажиров в год (группа 1), аэропорты, принимающие от 10 до 25 миллионов пассажиров (группа 2), аэропорты, принимающие около 5 и 10 миллионов пассажиров (группа 3) и аэропорты, принимающие менее 5 миллионов пассажиров в год (группа 4), сообщили о средней регулировке на **+4.3%**, **+9.0%**, **+10.0%** и **+9.4%**.

Аэропорты, сообщившие о наибольшем повышении пассажирооборота, прилагаются ниже:

ГРУППА 1: Москва-Шереметьево (**+16.8%**), Манчестер (**+13.0%**), Лондон-Гатвик (**+10.0%**), Амстердам (**+8.6%**) и Осло (**+7.9%**)

ГРУППА 2: Варшавский аэропорт имени Фредерика Шопена (**+28.5%**), Санкт-Петербург (**+26.8%**), Лиссабон (**21.2%**), Прага (**+18.8%**) и Брюссель (**+16.7%**)

ГРУППА 3: Кефлавик (**+53.7%**), Киев (**+32.2%**), Ларнака (**+26.9%**), Мальта (**+22.1%**), Международный аэропорт имени Анри Коанды (**+21.4%**)

ГРУППА 4: Международный аэропорт Бухарест Бэняса имени Ауреля Влайку (**+679.0%**), Ниш (**+335.2%**), Орадя (**+125.0%**), Миконос (**+99.1%**) и Задар (**98.5%**)



ДАННЫЕ ЗА МАРТ

В течение **марта** средний рост пассажиропотока составил **+6.6%**. Грузовая отрасль сообщила об исключительном приросте на **+13.7%**, а передвижения выросли на **+4.4%**.

Аэропорты, принимающие более чем 25 миллионов пассажиров в год (группа 1), аэропорты, принимающие от 10 до 25 миллионов пассажиров (группа 2), аэропорты, принимающие около 5 и 10 миллионов пассажиров (группа 3) и аэропорты, принимающие менее 5 миллионов пассажиров в год (группа 4), сообщили о средней регулировке на **+4.1%**, **+11.0%**, **+9.2%** and **+8.8%**.

Аэропорты, сообщившие в марте о наибольшем повышении пассажирооборота, прилагаются ниже:

ГРУППА 1: Москва-Шереметьево (**+15.9%**), Манчестер (**+10.0%**), Осло (**+9.2%**), Амстердам (**+8.9%**), Лондон-Гатвик (**+8.4%**)

ГРУППА 2: Брюссель (**+54.9%**), Варшавский аэропорт имени Фредерика Шопена (**+28.4%**), Санкт-Петербург (**+23.1%**), Лиссабон (**+21.9%**) и Тель-Авив (**+18.2%**)

ГРУППА 3: Кефлавик (**+44.8%**), Киев (**+30.3%**), Международный аэропорт имени Анри Коанды (**+21.5%**), Ларнака (**+21.0%**) и Порту (**+18.2%**)

ГРУППА 4: Международный аэропорт Бухарест Бэняса имени Ауеля Влайку (**+1,140.4%**), Фоджа (**+500.0%**), Ниш (**+328.2%**), Задар (**+267.0%**) и Орадя (**+122.9%**)

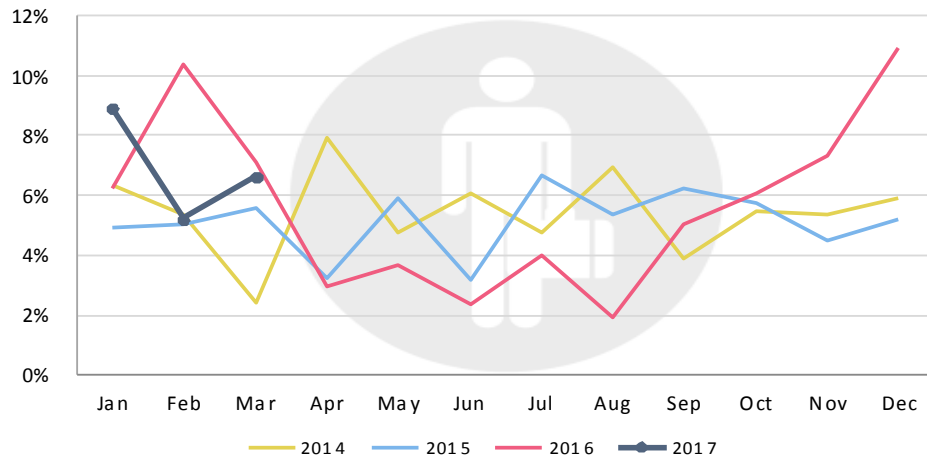
'Отчёт международного совета аэропортов о трафике аэропортов за март и первый квартал 2017 года' включает в себя в общей сложности 232 аэропорта, что составляет более чем 88% европейского воздушного трафика.



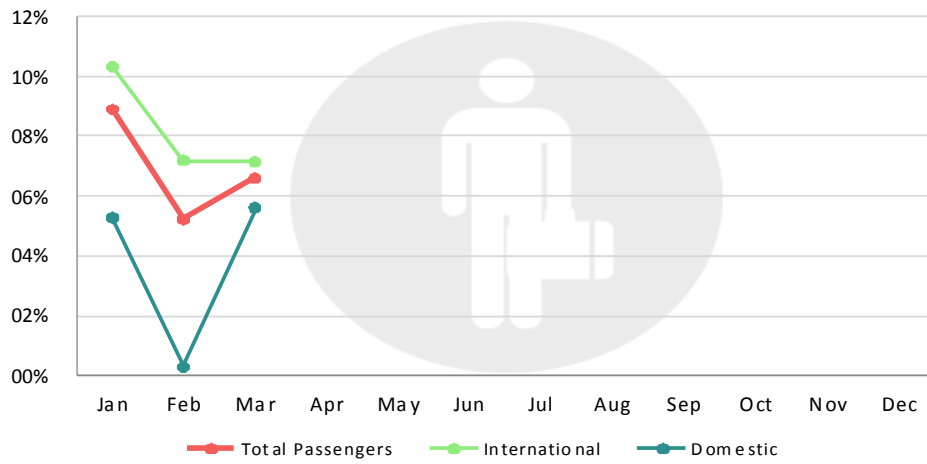
EXECUTIVE SUMMARY (March 2017)

	March 2017/2016	YTD 2017	Quarter (Q1) 2017/2016
Total Passengers	6.6%	6.9%	6.9%
EU airports	6.4%	7.2%	7.2%
Non-EU airports	7.4%	5.9%	5.9%
Passengers International	7.2%	8.2%	8.2%
EU airports	7.0%	8.4%	8.4%
Non-EU airports	7.8%	7.2%	7.2%
Passengers Domestic	5.6%	3.7%	3.7%
EU airports	4.8%	3.8%	3.8%
Non-EU airports	6.8%	3.9%	3.9%
Freight	13.7%	8.0%	8.0%
EU airports	12.7%	7.7%	7.7%
Non-EU airports	18.3%	9.2%	9.2%
Movements	4.4%	3.0%	3.0%
EU airports	4.7%	3.4%	3.4%
Non-EU airports	3.8%	1.8%	1.8%
PAX + Freight Combined	4.4%	3.1%	3.1%
Cargo only	8.8%	2.1%	2.1%

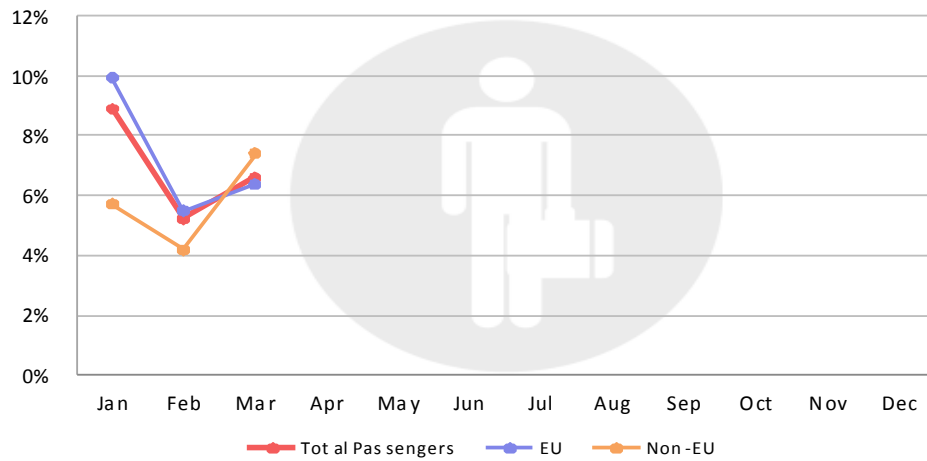
TOTAL PASSENGER DEVELOPMENT (Year-on-year changes)



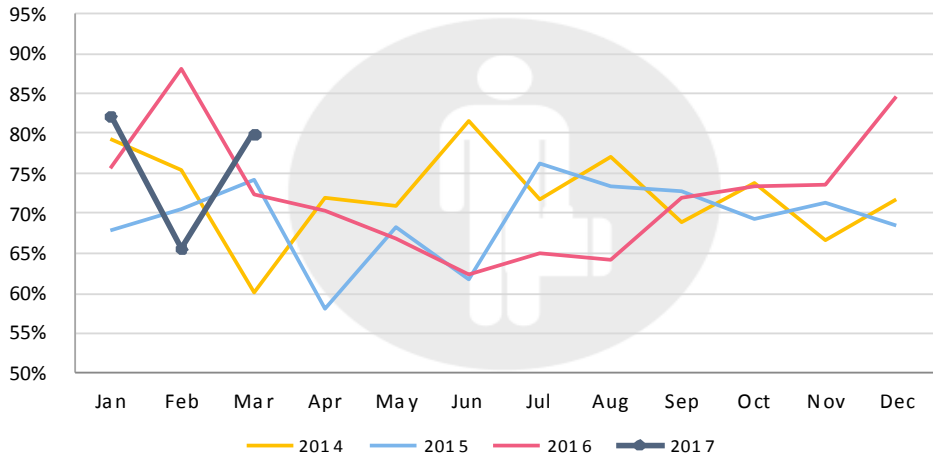
INTERNATIONAL & DOMESTIC PASSENGERS



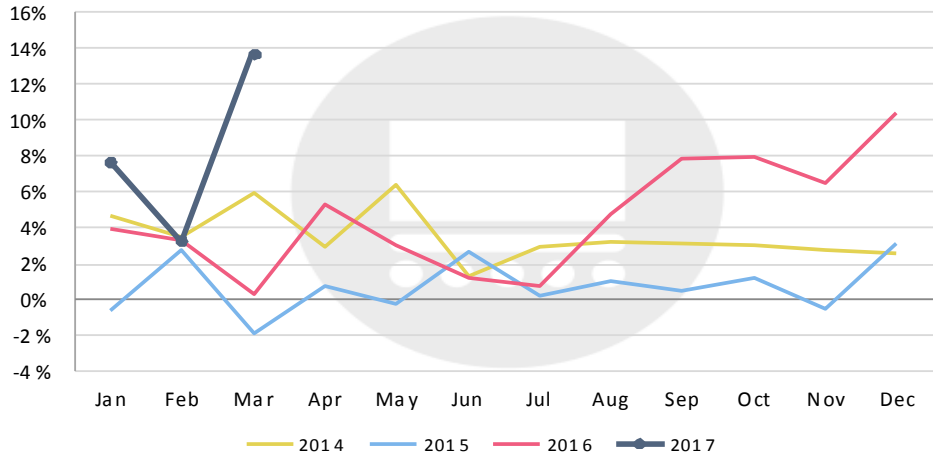
EU/NON-EU AIRPORTS PASSENGER TRAFFIC



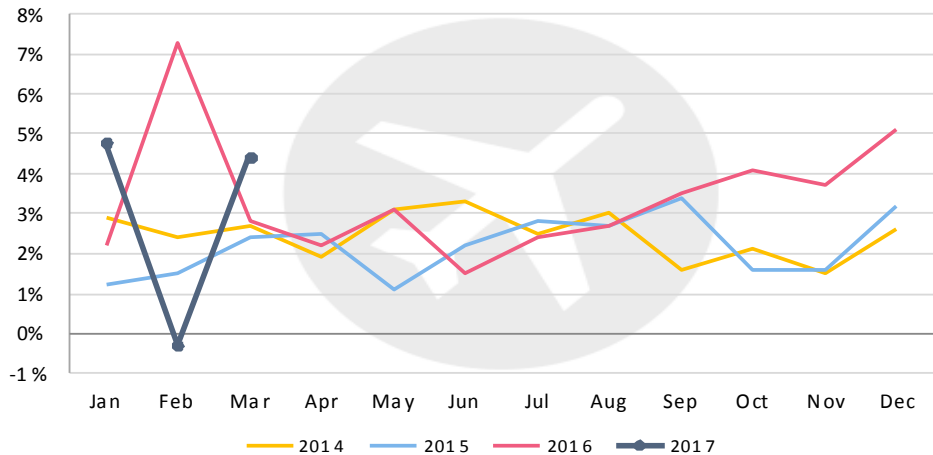
PERCENTAGE OF AIRPORTS WITH INCREASING PASSENGER TRAFFIC



TOTAL FREIGHT DEVELOPMENT



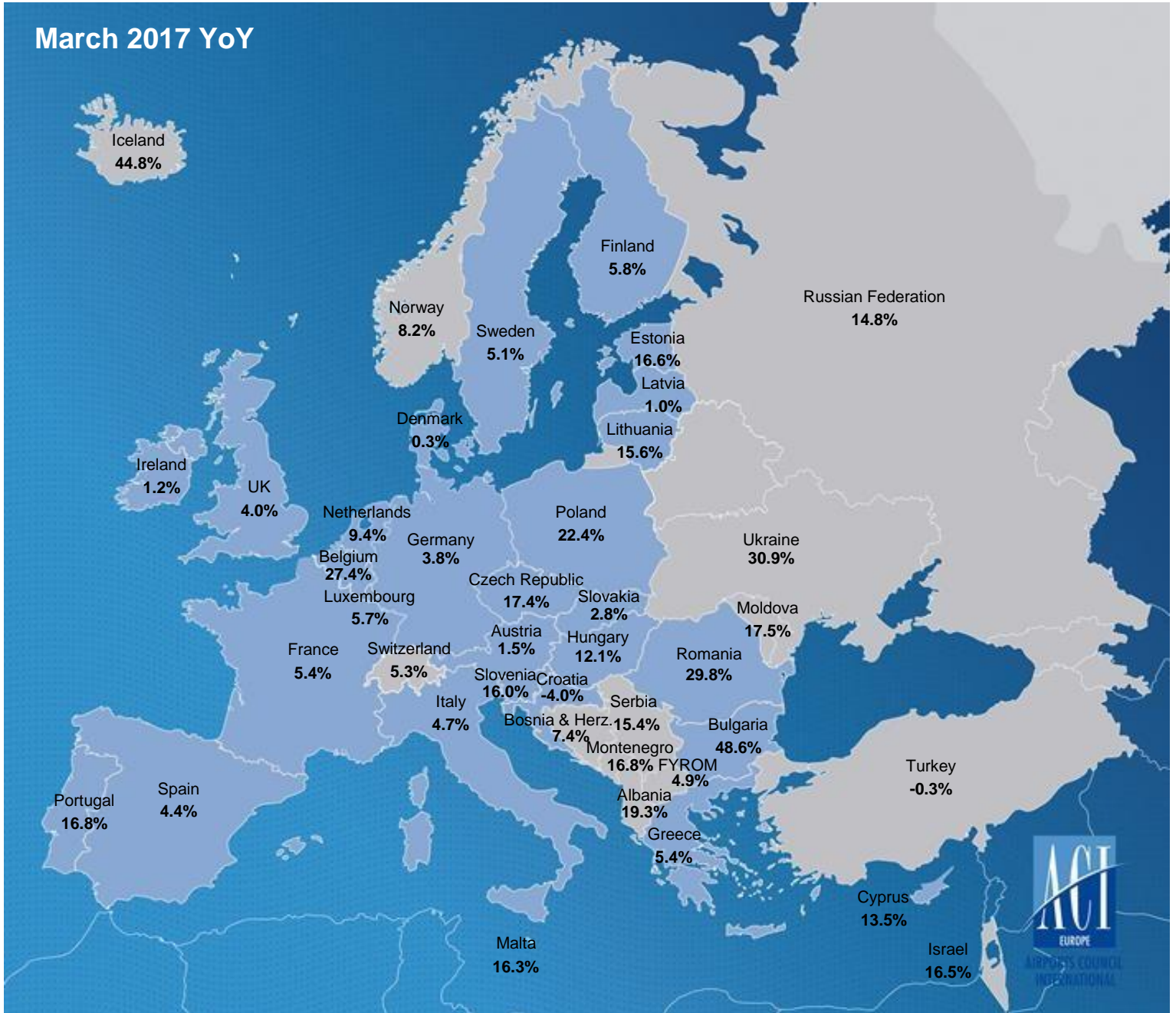
TOTAL MOVEMENTS DEVELOPMENT



TRAFFIC DEVELOPMENT (March 2017)

	March 2017/2016	March 2017/2015	March 2017/2014
Total Passengers	6.6%	14.0%	20.3%
EU airports	6.4%	14.4%	21.7%
Non-EU airports	7.4%	13.0%	15.5%
Passengers International	7.2%	14.9%	21.2%
EU airports	7.0%	15.8%	23.4%
Non-EU airports	7.8%	10.7%	11.4%
Passengers Domestic	5.6%	12.2%	17.5%
EU airports	4.8%	9.4%	14.7%
Non-EU airports	6.8%	17.0%	22.2%
Freight	13.7%	15.1%	8.1%
EU airports	12.7%	13.6%	11.7%
Non-EU airports	18.3%	24.8%	-8.9%
Movements	4.4%	6.7%	9.2%
EU airports	4.7%	7.5%	10.3%
Non-EU airports	3.8%	4.0%	5.9%
PAX + Freight Combined	4.4%	6.9%	9.3%
Cargo only	8.8%	1.4%	6.4%

PASSENGER DEVELOPMENT EUROPEAN COUNTRIES (March 2017 YoY)



PASSENGER TRAFFIC GROWTH BY TRAFFIC CATEGORY (March 2017)

GROUP 1		GROUP 2		GROUP 3		GROUP 4	
Over 25 million pax		Between 10 and 25 million pax		Between 5 and 10 million pax		Less than 5 million pax	
2017/2016	2017/2015	2017/2016	2017/2015	2017/2016	2017/2015	2017/2016	2017/2015
4.1%	11.0%	9.1%	15.3%	9.2%	20.9%	8.8%	17.5%

			PASSENGERS		COMMERCIAL MOVEMENTS		FREIGHT		
			March		March		March		
CITY	CODE		2017/16	2017/15	2017/16		2017/16		
1	London	LHR	6,157,445	0.9%	3.4%	39,409	0.6%	148,269	12.6%
2	Paris	CDG	5,301,769	3.2%	4.0%	38,008	0.9%	177,000	6.0%
3	Amsterdam	AMS	5,170,386	8.9%	23.2%	39,436	6.9%	153,545	9.5%
4	Frankfurt	FRA	4,872,599	1.8%	5.8%	37,014	0.9%	195,506	11.3%
5	Istanbul	IST	4,713,015	-3.6%	3.6%	34,824	-6.2%	86,371	16.1%
6	Madrid	MAD	4,195,609	5.2%	14.7%	30,145	2.6%	41,275	18.5%
7	Munich	MUC	3,526,769	5.6%	8.6%	32,051	8.1%	32,237	12.4%
8	Barcelona	BCN	3,465,337	5.0%	19.9%	23,233	3.4%	13,670	18.8%
9	London	LGW	3,391,027	8.4%	14.6%	22,098	5.8%	7,817	34.0%
10	Rome	FCO	3,058,562	-0.4%	0.3%	22,704	-6.5%	13,735	15.3%
11	Moscow	SVO	2,882,200	15.9%	27.1%	23,252	12.0%	20,023	50.6%
12	Paris	ORY	2,536,176	4.9%	7.8%	18,519	0.0%	7,763	-21.6%
13	Istanbul	SAW	2,369,719	4.3%	20.4%	16,676	-6.6%	6,251	13.3%
14	Copenhagen	CPH	2,274,546	-0.2%	11.0%	21,594	2.1%		
15	Oslo	OSL	2,214,782	9.2%	15.2%	21,118	10.8%	9,377	6.3%
16	Zürich	ZRH	2,191,945	6.4%	10.4%	20,375	2.0%	31,168	21.1%
17	Dublin	DUB	2,178,412	2.0%	19.8%	16,269	2.8%	12,168	10.4%
18	Stockholm	ARN	2,102,839	6.1%	15.9%	20,767	11.9%	8,060	31.3%
19	Moscow	DME	2,078,000	7.8%	3.9%	17,009	3.0%	11,303	11.5%
20	Manchester	MAN	1,928,243	10.0%	22.1%	14,486	10.3%	9,658	15.1%
21	Düsseldorf	DUS	1,920,518	14.2%	13.1%	17,320	12.1%	8,819	28.4%
22	Lisbon	LIS	1,905,870	21.9%	28.1%	14,715	13.8%	9,554	24.4%
23	London	STN	1,877,849	-0.8%	12.7%	13,211	0.3%		
24	Brussels	BRU	1,876,223	54.9%	9.8%	17,909	46.6%	48,876	51.4%
25	Vienna	VIE	1,725,303	0.8%	2.8%	17,320	-1.9%	18,898	10.9%
26	Milan	MLX	1,635,443	10.4%	14.5%	13,460	4.7%	53,963	19.1%
27	Geneva	GVA	1,634,321	4.2%	10.6%	13,741	2.0%	5,785	39.6%
28	Berlin	TXL	1,537,611	-8.0%	-8.5%	13,345	-10.0%	3,415	16.7%
29	Helsinki	HEL	1,495,155	5.3%	10.4%	14,360	3.7%	14,099	2.4%
30	Tel-Aviv	TLV	1,419,993	18.2%	22.8%	9,153	10.9%	30,738	11.3%
31	Hamburg	HAM	1,379,317	8.4%	10.5%	11,908	3.7%	3,265	5.2%
32	Athens	ATH	1,377,474	7.0%	25.4%	11,878	0.8%	7,042	3.4%
33	Málaga	AGP	1,197,019	9.3%	33.1%	8,171	8.8%	204	25.9%

			PASSENGERS			COMMERCIAL MOVEMENTS		FREIGHT	
			March			March		March	
	CITY	CODE	2017/16		2017/15	2017/16		2017/16	
34	Gran Canaria	LPA	1,171,792	2.7%	16.4%	9,641	1.4%	1,598	7.0%
35	Palma De Mallorca	PMI	1,107,530	-7.7%	16.5%	9,203	-3.3%	851	11.1%
36	Ankara	ESB	1,100,004	8.6%	12.5%	7,876	0.8%	1,118	-2.4%
37	Warsaw	WAW	1,080,832	28.4%	34.4%	12,194	13.4%	7,031	24.6%
38	Prague	PRG	1,045,686	17.3%	32.8%	9,523	6.7%	5,904	11.6%
39	St Petersburg	LED	1,018,974	23.1%	18.0%	10,813	21.2%	2,538	34.4%
40	Tenerife	TFS	1,017,726	6.6%	15.9%	6,057	9.6%	258	8.9%
41	Berlin	SXF	964,854	7.5%	49.6%	7,224	8.1%	770	30.5%
42	Izmir	ADB	946,860	3.9%	8.3%	6,150	0.9%	1,487	-14.0%
43	Budapest	BUD	944,790	12.1%	27.3%	7,296	4.6%	7,513	21.2%
44	Bucharest	OTP	942,360	21.5%	44.5%	8,873	10.8%	3,168	16.1%
45	Milan	BGY	927,415	9.5%	20.9%	6,281	7.6%	11,739	14.4%
46	Alicante	ALC	907,429	8.5%	35.8%	6,265	9.5%	654	36.5%
47	Birmingham	BHX	904,790	8.9%	23.8%	8,468	11.5%	3,829	68.5%
48	Cologne	CGN	884,591	3.4%	27.4%	9,911	3.4%	71,286	10.5%
49	Antalya	AYT	826,982	-13.7%	-21.0%	5,809	-9.2%	761	10.4%
50	Lyon	LYS	791,785	13.8%	17.4%	9,034	7.6%	4,984	9.9%
51	Milan	LIN	788,692	3.5%	5.1%	8,046	-0.5%	1,268	19.1%
52	Porto	OPO	768,615	18.2%	38.6%	6,308	15.4%	3,249	20.5%
53	Stuttgart	STR	764,573	1.6%	6.1%	7,445	-4.4%	2,264	15.1%
54	Toulouse	TLS	719,896	15.1%	16.4%	7,388	11.5%	6,552	5.7%
55	Glasgow	GLA	706,589	6.9%	16.5%	6,865	2.9%	1,127	7.6%
56	Kiev	KBP	689,064	30.3%	50.0%	6,107	24.5%	3,164	39.0%
57	Venice	VCE	681,331	7.1%	20.1%	5,949	1.6%	4,496	15.9%
58	Marseille	MRS	639,304	7.4%	4.1%	7,237	4.6%	5,285	5.3%
59	Bologna	BLQ	615,747	6.6%	22.1%	5,300	5.3%	3,854	13.0%
60	Lanzarote	ACE	601,637	6.8%	16.7%	4,594	4.7%	160	4.6%
61	Keflavik	KEF	583,159	44.8%	106.3%	3,760	33.3%	4,671	15.8%
62	Basel	BSL	563,823	4.7%	9.9%	5,470	2.8%	5,568	24.6%
63	Charleroi	CRL	540,604	-6.6%	12.3%	3,451	-10.0%	4	-44.6%
64	Sofia	SOF	515,857	52.1%	69.1%	4,183	27.5%	1,564	-12.1%
65	Göteborg	GOT	512,043	3.1%	9.0%	5,643	5.1%	1,266	35.0%
66	Rome	CIA	503,631	5.7%	13.3%	3,040	1.4%	1,458	3.7%
67	Fuerteventura	FUE	494,657	1.9%	18.2%	3,716	0.3%	84	2.4%
68	Bergen	BGO	477,344	1.6%	0.1%	7,011	1.0%	292	12.9%
69	Valencia	VLC	463,407	10.0%	28.8%	3,992	6.4%	1,373	32.7%
70	Naples	NAP	460,964	8.4%	14.9%	3,986	4.9%	622	0.6%
71	Adana	ADA	450,266	1.7%	11.6%	3,266	-3.5%	353	-10.4%
72	Bordeaux	BOD	435,962	12.5%	12.6%	4,352	7.7%	930	-0.2%
73	Krakow	KRK	433,985	19.5%	43.8%	3,422	13.2%	58	23.2%
74	Riga	RIX	419,337	1.0%	13.0%	5,253	3.7%	1,059	-6.4%
75	Sevilla	SVQ	419,307	9.9%	21.1%	2,974	3.2%	675	13.8%
76	Eindhoven	EIN	413,869	16.6%	32.7%	2,634	12.3%		
77	Thessaloniki	SKG	409,035	6.5%	17.4%				
78	Faro	FAO	405,570	3.7%	45.9%	2,874	1.6%	5	-51.0%
79	Hanover	HAJ	393,030	-3.2%	-2.3%	3,948	-4.8%	860	54.4%
80	Malta	MLA	386,720	16.3%	39.1%	2,936	16.5%	1,243	0.1%
81	Trondheim	TRD	384,116	8.8%	7.1%	4,802	11.0%	153	30.9%
82	Turin	TRN	376,137	8.8%	21.7%	3,355	8.2%	53	-76.0%

			PASSENGERS			COMMERCIAL MOVEMENTS		FREIGHT	
			March			March		March	
CITY		CODE	2017/16		2017/15	2017/16		2017/16	
83	Bilbao	BIO	371,265	3.5%	16.8%	3,581	7.4%	282	13.3%
84	Palermo	PMO	362,179	0.0%	20.4%	2,821	-4.8%	23	-41.0%
85	Tenerife	TFN	352,974	-1.7%	20.6%	4,443	1.4%	1,412	17.6%
86	Larnaca	LCA	351,560	21.0%	50.0%	3,393	25.8%	2,564	17.8%
87	Stavanger	SVG	344,966	4.0%	-5.4%	5,651	5.5%	478	15.4%
88	Belgrade	BEG	344,542	9.9%	9.2%	4,137	2.1%	1,657	62.3%
89	Bari	BRI	333,806	6.8%	15.0%	2,472	1.8%	26	-85.0%
90	Nantes	NTE	333,382	10.2%	4.1%	3,807	7.9%	1,246	30.7%
91	Novosibirsk	OVV	333,344	28.7%	35.8%	3,616	23.2%	1,919	10.3%
92	Ekaterinburg	SVX	330,648	20.0%	27.4%	3,178	8.1%	1,815	-14.4%
93	Vilnius	VNO	299,687	12.3%	30.6%	3,215	9.2%	736	23.1%
94	Trabzon	TZX	287,363	8.9%	25.1%	1,872	5.7%	219	208.5%
95	Nürnberg	NUE	280,726	22.9%	16.0%	3,623	14.2%	579	26.5%
96	East Midlands	EMA	277,407	-1.4%	4.4%	4,379	0.1%	28,323	6.7%
97	Aberdeen	ABZ	246,734	0.9%	-13.4%	7,274	-3.0%	551	-1.6%
98	Funchal	FNC	245,533	4.2%	14.6%	1,898	7.9%	236	11.1%
99	Luxembourg	LUX	243,807	5.7%	36.2%	4,972	4.7%	78,467	21.4%
100	Cagliari	CAG	232,326	2.9%	11.7%	1,602	-5.5%	136	-3.5%
101	Stockholm	BMA	230,271	11.1%	-1.5%	4,443	14.0%		
102	Billund	BLL	223,882	5.4%	32.8%	2,917	4.9%	6,587	28.8%
103	Treviso	TSF	217,533	6.4%	0.3%	1,294	2.7%		
104	Salzburg	SZG	214,631	4.4%	10.5%	2,032	4.0%	19	5.6%
105	Katowice	KTW	207,142	11.7%	19.6%	1,817	9.7%	1,476	18.2%
106	Tromsø	TOS	203,140	18.7%	15.2%	3,048	14.3%	149	37.1%
107	Ibiza	IBZ	202,854	4.6%	23.4%	2,208	7.4%	121	-0.8%
108	Rostov	ROV	193,461	41.9%	35.8%	1,643	11.5%	331	-9.3%
109	Zagreb	ZAG	190,950	-4.0%	3.5%	2,708	-5.0%	484	5.9%
110	Cluj	CLJ	187,463	61.5%	75.3%	2,176	51.0%	428	137.8%
111	Malmö	MMX	185,041	3.6%	9.9%	2,370	9.4%	2,723	0.4%
112	Tallinn	TLL	184,424	16.6%	13.3%	3,037	14.3%	641	-37.3%
113	Florence	FLR	183,894	2.5%	17.2%	2,035	0.9%	6	-15.3%
114	Verona	VRN	182,730	10.0%	29.0%	1,659	-1.0%	507	17.7%
115	Tirana	TIA	175,914	19.3%	26.7%	1,632	5.0%	153	-1.0%
116	Samara	KUF	172,284	18.3%	35.8%	927	5.5%	245	17.7%
117	Bremen	BRE	171,459	-10.2%	-13.3%			69	13.1%
118	Bodo	BOO	162,570	15.2%	8.1%	3,306	14.3%	104	12.6%
119	Southampton	SOU	158,157	7.5%	6.2%	3,155	9.5%	13	-18.8%
120	Brindisi	BDS	155,634	-2.9%	1.2%	1,074	-6.2%	1	22.0%
121	Chisinau	KIV	155,180	17.5%	32.5%	1,789	25.5%	213	23.8%
122	Cork	ORK	154,162	-4.7%	8.9%	1,427	-6.3%	2	0.0%
123	Vladivostok	VVO	140,786	-15.3%	40.4%	780	10.0%		
124	Timisoara	TSR	129,624	66.2%	78.8%	1,385	49.4%	338	2.8%
125	Stockholm	NYO	128,588	-10.4%	23.0%	940	-9.1%	18	-8.8%
126	Pristina	PRN	126,225	-0.8%	21.9%	928	-6.1%	89	22.6%
127	Skopje	SKP	125,535	3.8%	31.1%	1,104	-1.6%	197	-36.4%
128	Paphos	PFO	124,900	-3.5%	10.6%	855	-2.1%	74	196.0%
129	Eilath	ETH	123,577	-0.5%	2.2%	1,238	-7.3%		
130	Lille	LIL	117,573	-8.4%	23.8%	1,642	24.2%	2,695	-12.1%
131	Ponta Delgada	PDL	117,089	9.9%	77.5%	1,302	22.1%	390	-2.0%

			PASSENGERS			COMMERCIAL MOVEMENTS		FREIGHT	
			March			March		March	
	CITY	CODE	2017/16		2017/15	2017/16		2017/16	
132	Shannon	SNN	110,483	-4.6%	10.4%	925	-2.5%	1,155	17.1%
133	Poznan	POZ	110,261	3.9%	43.8%	1,104	0.4%	12	130.0%
134	Ljubljana	LJU	108,964	16.0%	19.9%	1,886	8.2%	907	18.4%
135	Luleå	LLA	107,680	6.9%	11.6%	1,075	11.3%	46	-4.2%
136	Bratislava	BTS	107,595	2.8%	31.5%	1,087	0.5%	2,131	11.7%
137	Chelyabinsk	CEK	102,349	6.5%	30.2%	433	0.2%	224	7.1%
138	Menorca	MAH	101,729	6.5%	35.8%	1,268	-8.6%	92	-25.2%
139	Bodrum	BJV	100,654	12.3%	23.2%	670	7.7%	9	125.0%
140	Heraklion	HER	93,507	-1.5%	21.6%				
141	Umeå	UME	92,503	1.3%	8.3%	1,526	12.4%	33	13.8%
142	Oulu	OUL	89,301	5.0%	4.0%				
143	Kristiansand	KRS	85,210	5.4%	-2.6%	1,380	7.2%	27	-69.8%
144	Aalesund	AES	85,087	2.0%	-5.3%	1,084	-1.5%	30	14.9%
145	Chania	CHQ	82,167	-5.7%	18.5%				
147	Bacau	BCM	81,877	50.1%	-98.4%	891	27.7%	4	280.0%
147	Iasi	IAS	81,877	50.1%	75.3%	891	27.7%	4	280.0%
148	Grenoble	GNB	81,443	9.9%	13.6%	767	24.5%		
149	Odessa	ODS	80,877	27.1%	50.0%	829	32.9%	50	5.3%
150	Memmingerberg	FMM	77,082	16.6%	58.4%	494	8.8%		
151	Graz	GRZ	76,985	10.0%	16.9%	1,228	11.6%	14	-68.9%
152	Brest	BES	75,744	1.7%	-1.4%	1,123	4.3%	170	-40.2%
153	Biarritz	BIQ	75,612	8.9%	13.8%	786	19.5%		
154	Strasbourg	SXB	74,531	-9.5%	-12.1%	1,595	-4.5%	5	25.0%
155	Volgograd	VOG	67,915	15.6%	9.9%	272	16.2%	74	17.6%
156	Mugla	DLM	67,345	20.1%	38.8%	475	14.7%	2	-50.0%
157	Isle Of Man	IOM	65,898	-2.8%	4.7%	1,828	-20.8%	26	52.9%
158	Girona	GRO	62,373	-16.6%	-8.9%	424	-11.1%	3	0.0%
159	Harstad	EVE	62,352	5.8%	19.3%	805	15.0%	49	104.6%
160	Kaunas	KUN	62,316	22.3%	38.6%	635	24.8%		
161	Rhodes	RHO	61,900	-3.7%	20.1%				
162	Trieste	TRS	59,343	9.5%	11.8%	716	7.7%	2	-85.7%
163	Rovaniemi	RVN	58,893	17.5%	25.3%				
164	Ajaccio	AJA	58,657	1.1%	6.1%			475	14.3%
165	Sarajevo	SJJ	57,381	7.4%	14.1%	756	3.7%	165	33.1%
166	Ostersund	OSD	56,309	6.8%	12.6%	793	6.3%	9	12.5%
167	Podgorica	TGD	56,052	22.1%	31.0%	359	5.6%	50	4.0%
168	Pau	PUF	52,494	3.2%	1.0%	853	14.7%	119	-35.0%
169	Haugesund	HAU	52,161	8.9%	-3.6%	526	0.4%	18	-1.6%
170	Kharkiv	HRK	47,372	48.1%	227.8%	472	35.6%	22	212.9%
171	Chambery	CMF	46,394	-15.6%	-16.0%	1,499	-4.2%		
172	Muenster	FMO	46,361	-0.6%	-4.8%	710	5.2%	4	-80.0%
173	Tomsk	TOF	45,379	45.7%	40.4%	372	44.2%	166	26.6%
174	Santorini Thira	JTR	43,465	-10.3%	85.8%				
175	Bournemouth	BOH	41,930	12.7%	53.0%	263	-3.3%		
176	Astrakhan	ASF	41,453	2.8%	30.2%	270	-6.9%	71	-0.2%
177	Molde	MOL	39,626	-4.1%	6.3%	653	1.4%	25	7.0%
178	Sibiu	SBZ	38,193	56.5%	73.1%	498	29.7%	3	-28.8%
179	Angelholm	AGH	36,666	6.7%	4.0%	643	16.3%		
180	Varna	VAR	35,520	21.3%	45.6%	371	4.8%	13	80.3%

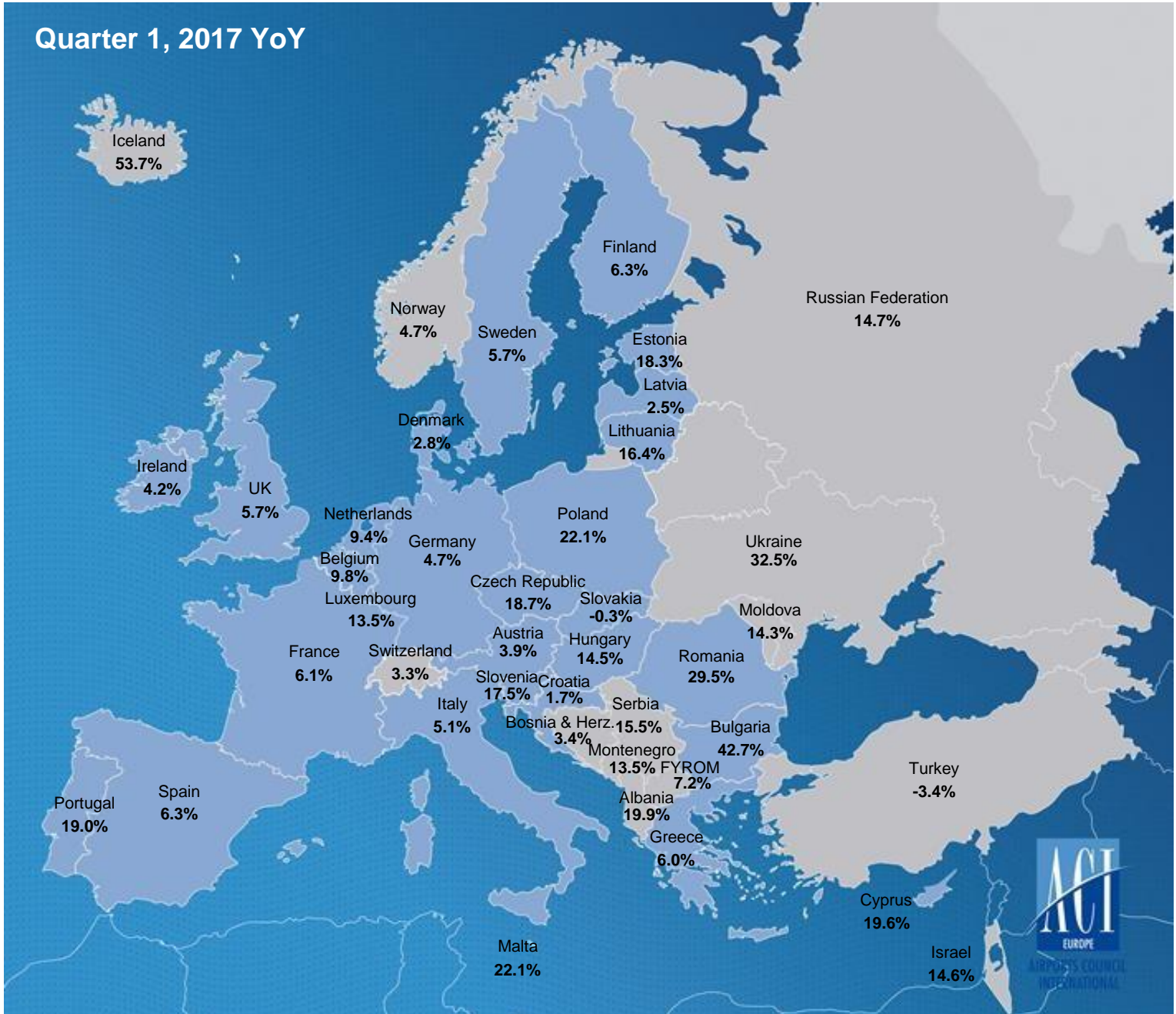
			PASSENGERS			COMMERCIAL MOVEMENTS		FREIGHT	
			March			March		March	
	CITY	CODE	2017/16		2017/15	2017/16		2017/16	
181	Friedrichshafen	FDH	34,489	-11.6%	-5.8%	644	-8.8%		
182	Dubrovnik	DBV	33,834	-18.8%	40.1%	394	-21.8%	15	-0.2%
183	Split	SPU	33,476	-3.8%	1.9%	513	17.4%	16	-27.6%
184	Visby	VBY	32,879	9.4%	13.1%	775	14.8%	8	0.0%
185	Alta	ALF	32,213	12.2%	-4.7%	593	9.6%	47	111.5%
186	Kiruna	KRN	30,706	9.1%	7.9%	304	15.2%	7	16.7%
187	Toulon	TLN	30,467	-7.2%	-6.6%	495	-4.3%		
188	Turku	TKU	28,908	6.9%	11.5%				
189	Linz	LNZ	27,703	5.9%	-15.3%	556	11.6%	1,037	46.4%
190	Kirkenes	KKN	26,282	18.5%	11.4%	534	7.2%	32	-1.5%
191	Vaasa	VAA	25,707	0.6%	-7.1%				
192	Kristiansund	KSU	24,967	1.0%	-15.6%	768	0.4%	12	50.5%
193	Mytilene	MJT	24,634	-15.5%	15.8%				
194	Nis	INI	23,540	328.2%	9.2%	88	363.2%	302	715.7%
195	Ronneby	RNB	22,969	10.8%	17.2%	424	9.8%	1	0.0%
196	Corfou	CFU	22,375	22.4%	26.8%				
197	Tivat	TIV	20,208	4.1%	6.3%	143	-5.9%		
198	Palanga	PLQ	19,747	57.7%	105.5%	262	35.1%	0	-72.0%
199	Klagenfurt	KLU	17,517	-3.9%	-3.9%	306	0.3%		
200	Mikonos	JMK	17,340	98.4%	156.4%				
201	Tampere	TMP	17,080	20.2%	-32.4%				
202	Bardufoss	BDU	16,947	-16.1%	26.4%	165	-14.9%	8	111.3%
203	Hammerfest	HFT	16,755	25.4%	38.5%	930	7.4%	27	26.4%
204	Limoges	LIG	16,481	6.4%	-9.4%	357	9.8%		
205	Brno	BRQ	16,206	3.3%	-12.0%	343	48.5%	520	72.0%
206	Ostend	OST	15,851	-70.1%	17.9%	212	-58.9%	1,908	-21.8%
207	Svalbard	LYR	14,296	3.0%	-10.4%	215	-15.4%	23	54.6%
208	Bourgas	BOJ	13,573	15.3%	49.4%	121	-11.7%	887	0.0%
209	Ostrava	OSR	13,384	51.4%	45.2%	309	22.1%	96	-5.1%
210	Kos	KGS	12,934	-2.9%	-4.8%				
211	Floro	FRO	12,687	0.4%	-23.8%	662	-18.0%	4	-4.5%
212	Mo i Rana	MQN	11,840	17.8%	6.4%	534	10.8%	19	69.7%
213	Leknes	LKN	11,067	15.4%	14.6%	423	7.4%	4	8.0%
214	Bronnoysund	BNN	11,039	11.3%	-9.8%	591	11.5%	3	40.5%
215	Stokmarknes	SKN	10,731	24.9%	3.7%	470	12.4%	5	-0.6%
216	Orsta	HOV	9,821	8.8%	-6.0%	367	1.1%	3	-6.7%
217	Vadso	VDS	9,574	108.6%	3.1%	564	5.4%		
218	Sandnessjoen	SSJ	9,450	19.6%	6.8%	549	15.8%		
219	Zadar	ZAD	8,353	267.0%	69.7%	158	46.3%		
220	Forde	FDE	8,154	12.8%	0.8%	353	0.3%		
221	Liège	LGG	8,133	-88.8%	-23.2%	2,457	-22.2%	65,071	10.0%
222	Sogndal	SOG	7,892	6.3%	3.8%	442	5.0%		
223	Mosjoen	MJF	7,849	9.3%	2.0%	483	-0.6%		
224	Oradea	OMR	7,745	122.9%	9345.1%	159	12.8%		
225	Ohrid	OHD	5,462	39.5%	377.9%	38	26.7%		
226	Monaco	MCM	5,203	-31.9%	-23.8%	2,439	-21.9%		
227	Zakynthos Island	ZTH	3,495	53.2%	107.5%				
228	Kefallinia	EFL	2,291	-5.4%	-6.0%				
229	Bucharest	BBU	1,290	140.4%	486.4%	124	93.8%		

		PASSENGERS			COMMERCIAL MOVEMENTS		FREIGHT	
		March			March		March	
CITY	CODE	2017/16	2017/15	2017/16	2017/16	2017/16	2017/16	2017/16
230	Foggia	FOG	72	500.0%	80.0%			
231	Arad	ARW	38	18.8%	-98.4%	16	14.3%	
232	Targu Mures	TGM	24	-99.9%	73.1%	8	-96.0%	

TRAFFIC DEVELOPMENT (Quarter 1, 2017)

	Quarter (Q1) 2017/2016	Quarter (Q1) 2017/2015	Quarter (Q1) 2017/2014
Total Passengers	6.9%	15.1%	21.0%
EU airports	7.2%	16.0%	22.9%
Non-EU airports	5.9%	12.0%	14.8%
Passengers International	8.2%	16.5%	22.8%
EU airports	8.4%	17.7%	25.1%
Non-EU airports	7.2%	9.1%	10.5%
Passengers Domestic	3.7%	11.9%	16.6%
EU airports	3.8%	10.2%	14.0%
Non-EU airports	3.9%	14.5%	20.8%
Freight	8.0%	11.9%	9.8%
EU airports	7.7%	10.4%	10.6%
Non-EU airports	9.2%	22.3%	19.8%
Movements	3.0%	6.6%	8.3%
EU airports	3.4%	7.5%	9.7%
Non-EU airports	1.8%	3.3%	4.1%
PAX + Freight Combined	3.1%	7.0%	8.6%
Cargo only	2.1%	-0.2%	1.4%

PASSENGER DEVELOPMENT EUROPEAN COUNTRIES (Quarter 1, 2017 YoY)



PASSENGER TRAFFIC GROWTH BY TRAFFIC CATEGORY (Quarter 1, 2017)

GROUP 1		GROUP 2		GROUP 3		GROUP 4	
Over 25 million pax		Between 10 and 25 million pax		Between 5 and 10 million pax		Less than 5 million pax	
2017/2016	2017/2015	2017/2016	2017/2015	2017/2016	2017/2015	2017/2016	2017/2015
4.3%	11.8%	9.0%	17.3%	10.0%	21.4%	9.4%	17.6%

			PASSENGERS		COMMERCIAL MOVEMENTS		FREIGHT		
			Quarter 1		Quarter 1		Quarter 1		
CITY		CODE	2017/16	2017/15	2017/16	2017/16	2017/16	2017/16	
1	London	LHR	17,168,256	2.2%	4.9%	111,406	-0.8%	399,481	7.3%
2	Paris	CDG	14,900,508	4.3%	5.6%	107,450	0.6%	471,837	0.4%
3	Amsterdam	AMS	14,077,124	8.6%	22.1%	108,499	5.3%	420,167	8.0%
4	Frankfurt	FRA	13,124,451	1.5%	4.9%	102,039	-1.4%	508,025	6.8%
5	Istanbul	IST	12,767,229	-7.0%	-1.4%	96,317	-8.4%	213,045	6.5%
6	Madrid	MAD	11,620,196	6.0%	18.5%	85,119	0.3%	108,509	11.4%
7	Munich	MUC	9,397,939	5.3%	8.5%	88,115	5.2%	85,483	7.8%
8	London	LGW	9,148,336	10.0%	17.5%	61,068	5.5%	19,816	18.7%
9	Barcelona	BCN	9,066,149	6.8%	24.0%	62,695	2.5%	34,682	11.4%
10	Rome	FCO	8,221,013	0.8%	4.6%	63,854	-6.2%	33,455	5.7%
11	Moscow	SVO	8,132,978	16.8%	27.5%	66,170	10.1%	47,911	37.7%
12	Paris	ORY	7,082,611	6.6%	10.2%	52,200	0.2%	20,703	-25.7%
13	Istanbul	SAW	6,577,141	-1.9%	17.3%	47,440	-7.0%	15,368	8.3%
14	Copenhagen	CPH	6,229,476	2.3%	15.8%	58,472	-1.5%	0	-
15	Moscow	DME	5,985,113	4.4%	4.7%	49,350	-1.2%	28,244	9.9%
16	Oslo	OSL	5,921,794	7.9%	13.8%	56,711	4.8%	27,871	3.9%
17	Dublin	DUB	5,826,363	4.7%	22.8%	44,916	2.1%	32,330	3.2%
18	Stockholm	ARN	5,675,540	7.8%	16.0%	54,888	7.7%	21,657	29.7%
19	Manchester	MAN	5,277,534	13.0%	23.8%	40,381	11.5%	25,391	13.5%
20	London	STN	5,276,541	0.7%	14.2%	37,477	-0.2%	34,964	1.7%
21	Lisbon	LIS	5,180,429	21.2%	30.2%	41,649	11.6%	26,247	23.9%
22	Düsseldorf	DUS	4,988,600	13.3%	14.6%	47,273	9.8%	24,020	24.3%
23	Brussels	BRU	4,970,275	16.7%	10.6%	49,471	12.1%	130,068	27.3%
24	Vienna	VIE	4,562,824	3.7%	6.1%	47,282	-2.2%	47,687	3.7%
25	Geneva	GVA	4,463,686	3.3%	10.9%	38,947	-0.2%	14,552	32.5%
26	Milan	MLX	4,438,352	11.2%	16.4%	36,697	3.5%	137,732	15.4%
27	Berlin	TXL	4,307,823	-2.4%	-1.1%	38,967	-5.4%	9,830	17.1%
28	Helsinki	HEL	4,160,376	6.1%	13.2%	40,545	2.6%	33,360	-15.0%
29	Athens	ATH	3,706,893	7.5%	24.4%	32,958	1.2%	18,145	-1.4%
30	Tel-Aviv	TLV	3,682,188	16.2%	25.0%	25,055	10.2%	80,809	6.5%
31	Hamburg	HAM	3,556,348	8.8%	12.3%	32,631	3.5%	8,664	4.2%
32	Gran Canaria	LPA	3,330,081	2.2%	14.7%	27,779	0.3%	4,413	-0.2%
33	Ankara	ESB	3,135,473	6.5%	11.8%	22,755	2.4%	2,719	-26.8%

			PASSENGERS			COMMERCIAL MOVEMENTS		FREIGHT	
			Quarter 1			Quarter 1		Quarter 1	
	CITY	CODE	2017/16		2017/15	2017/16		2017/16	
34	Warsaw	WAW	2,982,583	28.5%	37.6%	34,655	13.2%	18,772	27.0%
35	Málaga	AGP	2,975,640	13.6%	34.2%	21,379	9.5%	537	10.3%
36	St Petersburg	LED	2,934,813	26.8%	18.9%	30,991	20.7%	5,897	20.2%
37	Tenerife	TFS	2,895,178	7.4%	17.6%	17,685	7.1%	754	3.4%
38	Berlin	SXF	2,775,928	15.9%	66.0%	21,133	13.3%	2,000	20.1%
39	Prague	PRG	2,718,889	18.8%	35.2%	26,061	7.2%	16,439	23.4%
40	Izmir	ADB	2,685,542	0.8%	5.7%	17,561	1.8%	3,655	-30.2%
41	Bucharest	OTP	2,599,027	21.4%	43.7%	25,165	10.9%	7,721	10.4%
42	Milan	BGY	2,593,878	8.7%	19.9%	17,909	5.9%	30,260	8.1%
43	Budapest	BUD	2,550,070	14.5%	29.6%	20,211	5.9%	19,407	21.9%
44	Birmingham	BHX	2,489,220	12.0%	26.2%	23,578	11.0%	10,137	93.8%
45	Palma De Mallorca	PMI	2,470,326	-2.0%	15.4%	22,273	0.0%	2,209	1.4%
46	Cologne	CGN	2,334,356	4.0%	33.2%	27,273	2.3%	192,452	6.6%
47	Alicante	ALC	2,277,767	11.7%	36.4%	16,670	12.8%	1,644	23.4%
48	Milan	LIN	2,180,512	4.3%	7.5%	22,948	-0.5%	3,341	11.5%
49	Lyon	LYS	2,156,212	11.2%	16.4%	25,238	5.0%	14,145	8.7%
50	Porto	OPO	2,125,556	19.9%	40.9%	18,011	15.5%	8,731	15.5%
51	Antalya	AYT	2,098,972	-8.8%	-15.7%	15,015	-2.7%	2,027	13.0%
52	Kiev	KBP	1,999,415	32.2%	136.2%	17,802	24.8%	7,939	28.3%
53	Toulouse	TLS	1,997,208	15.4%	17.9%	20,744	8.7%	19,017	11.8%
54	Stuttgart	STR	1,944,338	-0.1%	6.6%	20,256	-5.6%	6,414	23.0%
55	Glasgow	GLA	1,907,898	6.3%	19.0%	18,966	4.9%	2,791	4.1%
56	Marseille	MRS	1,781,160	5.9%	7.4%	20,526	2.1%	14,334	2.8%
57	Venice	VCE	1,779,736	7.4%	18.8%	16,201	2.8%	11,313	7.1%
58	Lanzarote	ACE	1,670,187	8.1%	18.5%	13,114	8.1%	446	5.9%
59	Bologna	BLQ	1,637,501	4.6%	21.3%	14,317	1.1%	10,291	12.0%
60	Keflavik	KEF	1,563,902	53.7%	110.2%	10,384	39.8%	11,559	-0.9%
61	Charleroi	CRL	1,521,082	-0.6%	12.9%	9,843	-3.7%	19	-13.6%
62	Basel	BSL	1,460,714	3.4%	10.2%	14,680	0.7%	15,367	22.0%
63	Sofia	SOF	1,441,037	46.9%	66.3%	12,162	27.6%	4,246	-3.2%
64	Rome	CIA	1,414,080	4.7%	13.0%	8,823	1.3%	4,031	3.3%
65	Göteborg	GOT	1,406,355	3.2%	10.8%	15,175	-2.3%	3,395	27.2%
66	Fuerteventura	FUE	1,387,121	3.4%	20.5%	10,625	2.9%	231	-0.4%
67	Adana	ADA	1,302,406	-1.8%	7.5%	9,510	-1.9%	987	-26.8%
68	Bergen	BGO	1,275,365	-0.5%	-0.2%	19,164	-3.8%	795	0.1%
69	Valencia	VLC	1,193,668	13.0%	31.9%	10,661	-0.4%	3,422	13.9%
70	Bordeaux	BOD	1,185,182	10.5%	14.9%	11,814	5.4%	2,575	1.1%
71	Naples	NAP	1,178,337	9.8%	13.2%	10,466	4.4%	1,695	8.7%
72	Krakow	KRK	1,163,571	19.1%	41.1%	9,460	14.5%	154	20.3%
73	Riga	RIX	1,132,973	2.5%	14.8%	14,593	1.5%	2,653	-12.9%
74	Thessaloniki	SKG	1,131,804	4.8%	15.7%	0	-	0	-
75	Eindhoven	EIN	1,106,081	19.8%	36.1%	7,209	15.0%	0	-
76	Sevilla	SVQ	1,067,316	8.9%	23.4%	7,798	-0.6%	1,759	15.1%
77	Turin	TRN	1,038,247	7.6%	20.1%	9,608	5.3%	116	-65.6%
78	Trondheim	TRD	1,018,485	2.2%	5.0%	13,115	3.7%	415	16.2%
79	Malta	MLA	988,340	22.1%	40.8%	7,826	19.8%	3,684	9.6%
80	Hanover	HAJ	979,658	-2.8%	0.5%	10,724	-5.6%	2,455	29.7%
81	Tenerife	TFN	963,014	-0.4%	18.5%	12,340	-0.2%	3,418	16.8%
82	Belgrade	BEG	957,455	9.9%	7.6%	11,644	0.8%	3,697	17.5%

			PASSENGERS			COMMERCIAL MOVEMENTS		FREIGHT	
			Quarter 1			Quarter 1		Quarter 1	
	CITY	CODE	2017/16		2017/15	2017/16		2017/16	
83	Palermo	PMO	953,293	-0.9%	18.9%	7,826	-4.8%	65	-38.1%
84	Bilbao	BIO	950,976	5.7%	18.6%	9,356	4.0%	742	9.4%
85	Novosibirsk	OVB	940,626	27.8%	30.9%	10,102	19.6%	4,678	6.9%
86	Ekaterinburg	SVX	940,404	20.9%	26.7%	8,936	6.6%	4,405	-28.7%
87	Larnaca	LCA	931,690	26.9%	51.5%	9,169	27.8%	6,915	14.4%
88	Nantes	NTE	923,691	10.7%	39600.0%	10,723	7.4%	3,214	22.5%
89	Stavanger	SVG	915,919	-1.4%	-7.3%	15,371	-1.7%	1,102	-5.0%
90	Faro	FAO	902,507	14.4%	47.0%	6,698	11.0%	16	-11.1%
91	Bari	BRI	895,392	6.6%	14.8%	6,905	3.4%	68	-88.1%
92	Vilnius	VNO	834,959	14.4%	33.4%	9,080	8.1%	1,958	18.5%
93	Trabzon	TZX	802,940	4.5%	19.1%	5,260	5.7%	554	97.9%
94	East Midlands	EMA	730,169	7.6%	11.9%	11,973	1.7%	75,448	2.1%
95	Nürnberg	NUE	729,840	22.8%	15.8%	9,768	13.0%	1,712	25.3%
96	Aberdeen	ABZ	665,892	-1.3%	-15.7%	20,030	-4.1%	1,470	-6.8%
97	Salzburg	SZG	665,627	4.2%	6.2%	6,157	2.3%	53	0.0%
98	Funchal	FNC	664,405	10.1%	22.2%	5,603	13.6%	635	-2.3%
99	Luxembourg	LUX	657,916	13.5%	39.3%	13,650	6.4%	200,337	15.1%
100	Cagliari	CAG	628,513	2.2%	10.2%	4,560	-5.7%	362	-21.1%
101	Stockholm	BMA	604,180	4.3%	2.7%	11,576	4.7%	0	-
102	Billund	BLL	601,325	8.5%	44066.7%	7,893	2.0%	16,906	13.3%
103	Treviso	TSF	599,692	5.3%	89633.3%	3,644	1.9%	0	-
104	Katowice	KTW	570,134	9.6%	22.4%	5,036	6.2%	3,853	6.2%
105	Tromsø	TOS	566,816	9.9%	16.3%	8,459	5.3%	409	10.5%
106	Rostov	ROV	553,129	38.6%	37533.3%	4,716	10.8%	979	8.7%
107	Verona	VRN	522,430	8.3%	21.9%	4,839	-1.4%	1,039	-6.8%
108	Cluj	CLJ	518,902	60.1%	81.3%	5,503	52.1%	825	79.3%
109	Zagreb	ZAG	513,667	1.4%	7.9%	7,595	-5.4%	1,205	-4.4%
110	Tirana	TIA	508,041	19.9%	31.7%	4,854	7.2%	404	3.3%
111	Malmö	MMX	498,526	1.7%	12.3%	6,190	2.9%	6,656	-12.7%
112	Tallinn	TLL	489,305	18.3%	18.3%	8,357	11.9%	2,109	-3.0%
113	Ibiza	IBZ	485,468	8.1%	26.6%	5,713	2.8%	312	-4.6%
114	Florence	FLR	484,841	7.5%	15.0%	5,529	3.0%	12	-20.0%
115	Samara	KUF	480,385	15.6%	12733.3%	2,566	0.0%	618	15.7%
116	Chisinau	KIV	466,800	14.3%	22.8%	5,234	21.4%	526	23.2%
117	Bremen	BRE	448,565	-10.4%	-12.8%	0	-	169	-6.6%
118	Southampton	SOU	424,424	12.2%	9.2%	8,808	14.2%	42	-10.6%
119	Bodo	BOO	421,519	6.6%	10.3%	9,079	4.8%	285	9.2%
120	Cork	ORK	418,248	-0.1%	10.2%	3,963	-5.6%	7	40.0%
121	Brindisi	BDS	415,172	-4.1%	-0.8%	2,989	-6.2%	0	-
122	Vladivostok	VVO	403,662	0.9%	55300.0%	2,142	16.0%	0	-
123	Pristina	PRN	357,339	0.0%	18.9%	2,744	-4.3%	203	0.5%
124	Timisoara	TSR	355,242	69.3%	83.2%	4,018	48.4%	952	2.8%
125	Skopje	SKP	354,045	6.4%	34.0%	3,143	-1.1%	515	-30.0%
126	Stockholm	NYO	348,377	-5.3%	20.5%	2,608	-7.5%	58	1.8%
127	Eilath	ETH	337,078	-0.6%	1.2%	3,485	-3.8%	0	-
128	Lille	LIL	311,002	1.7%	76.2%	4,384	18.3%	8,829	4.4%
129	Poznan	POZ	308,906	4.4%	96766.7%	3,084	-1.8%	26	30.0%
130	Ponta Delgada	PDL	302,864	11.1%	74.8%	3,588	21.5%	1,035	5.4%
131	Shannon	SNN	299,739	1.4%	16.7%	2,594	0.1%	3,586	30.0%

			PASSENGERS			COMMERCIAL MOVEMENTS		FREIGHT	
			Quarter 1			Quarter 1		Quarter 1	
CITY		CODE	2017/16		2017/15	2017/16		2017/16	
132	Bratislava	BTS	298,165	-0.3%	264.3%	2,999	-4.0%	5,672	5.9%
133	Chelyabinsk	CEK	288,886	4.2%	29433.3%	1,228	-5.3%	593	9.2%
134	Ljubljana	LJU	288,355	17.5%	22.0%	5,289	11.2%	2,388	12.9%
135	Luleå	LLA	285,119	3.1%	8.1%	2,759	0.4%	135	8.0%
136	Paphos	PFO	274,913	0.3%	6.9%	1,925	3.6%	196	335.6%
137	Bodrum	BJV	264,553	5.2%	18.8%	1,746	1.4%	23	76.9%
138	Oulu	OUL	249,054	3.2%	6.5%	0	-	0	-
139	Umeå	UME	247,969	0.2%	7.3%	4,119	7.2%	93	5.7%
140	Heraklion	HER	245,795	8.0%	18.6%	0	-	0	-
141	Grenoble	GNB	244,339	7.8%	9.6%	2,569	19.5%	0	-
142	Iasi	IAS	232,615	61.8%	53733.3%	2,547	33.9%	6	100.0%
143	Menorca	MAH	229,809	7.8%	33.5%	3,397	-6.2%	318	1.6%
144	Kristiansand	KRS	229,443	0.4%	-3.4%	3,831	-0.6%	82	-61.1%
145	Aalesund	AES	226,249	-1.6%	-6.6%	2,955	-4.1%	74	-5.1%
146	Odessa	ODS	221,494	27.1%	33033.3%	2,342	34.7%	131	0.8%
147	Memmingen	FMM	217,601	31.1%	67.9%	1,422	26.2%	0	-
148	Brest	BES	215,294	1.8%	2.0%	3,305	6.4%	730	-4.7%
149	Chania	CHQ	215,148	-3.1%	13.5%	0	-	0	-
150	Biarritz	BIQ	204,423	12.2%	15.0%	2,220	23.9%	0	-
151	Strasbourg	SXB	203,382	-10.0%	-10.9%	4,377	-8.2%	16	60.0%
152	Graz	GRZ	197,665	8.2%	18.9%	3,269	8.2%	42	-38.2%
153	Volgograd	VOG	193,946	10.6%	24.6%	782	13.2%	177	12.0%
154	Rovaniemi	RVN	182,777	17.9%	30.5%	0	-	0	-
155	Isle Of Man	IOM	180,004	-0.6%	9.8%	4,947	-21.9%	73	-2.7%
156	Kaunas	KUN	174,865	15.3%	288.9%	1,779	23.5%	176	000.0%
157	Rhodes	RHO	169,038	0.8%	18.7%	0	-	0	-
158	Mugla	DLM	167,343	13.2%	42.3%	1,148	8.7%	10	0.0%
159	Ajaccio	AJA	164,816	3.7%	8.7%	0	-	1,297	10.2%
160	Harstad	EVE	158,582	2.8%	13.4%	2,126	6.1%	121	13.1%
161	Trieste	TRS	157,617	7.5%	12.5%	1,987	6.8%	7	-70.8%
162	Podgorica	TGD	153,589	21.5%	31.9%	1,390	8.7%	126	-3.1%
163	Ostersund	OSD	153,328	8.9%	19.4%	2,122	1.8%	26	13.0%
164	Pau	PUF	145,155	0.2%	0.6%	2,376	10.3%	180	-33.8%
165	Sarajevo	SJJ	141,880	3.4%	6.0%	1,980	-0.1%	724	119.4%
166	Girona	GRO	140,298	-18.3%	-14.7%	958	-23.1%	10	-28.6%
167	Haugesund	HAU	139,870	2.4%	-4.1%	1,494	-8.1%	52	2.0%
168	Bacau	BCM	139,586	37.9%	52766.7%	1,419	28.0%	6	100.0%
169	Chambery	CMF	138,831	-18.8%	17.2%	4,307	4.2%	0	-
170	Kharkiv	HRK	134,849	48.3%	833.0%	1,302	31.2%	52	-29.7%
171	Tomsk	TOF	126,900	40.4%	29.6%	1,026	37.9%	397	19.6%
172	Muenster	FMO	116,244	-0.5%	-2.5%	1,901	1.4%	9	-72.7%
173	Astrakhan	ASF	115,080	0.7%	31.3%	763	-1.2%	175	2.9%
174	Molde	MOL	110,794	-4.1%	5.9%	1,886	-0.7%	68	-1.4%
175	Bournemouth	BOH	108,766	13.1%	55.3%	714	-13.7%	4	-42.9%
176	Sibiu	SBZ	103,770	59.9%	72.5%	1,333	27.3%	5	-50.0%
177	Santorini Thira	JTR	101,532	-7.9%	109.4%	0	-	0	-
178	Angelholm	AGH	96,900	6.5%	8.5%	1,649	11.7%	0	-
179	Varna	VAR	93,612	13.4%	40.0%	1,014	5.2%	117	485.0%
180	Kiruna	KRN	87,791	12.2%	9.2%	833	14.4%	20	11.1%

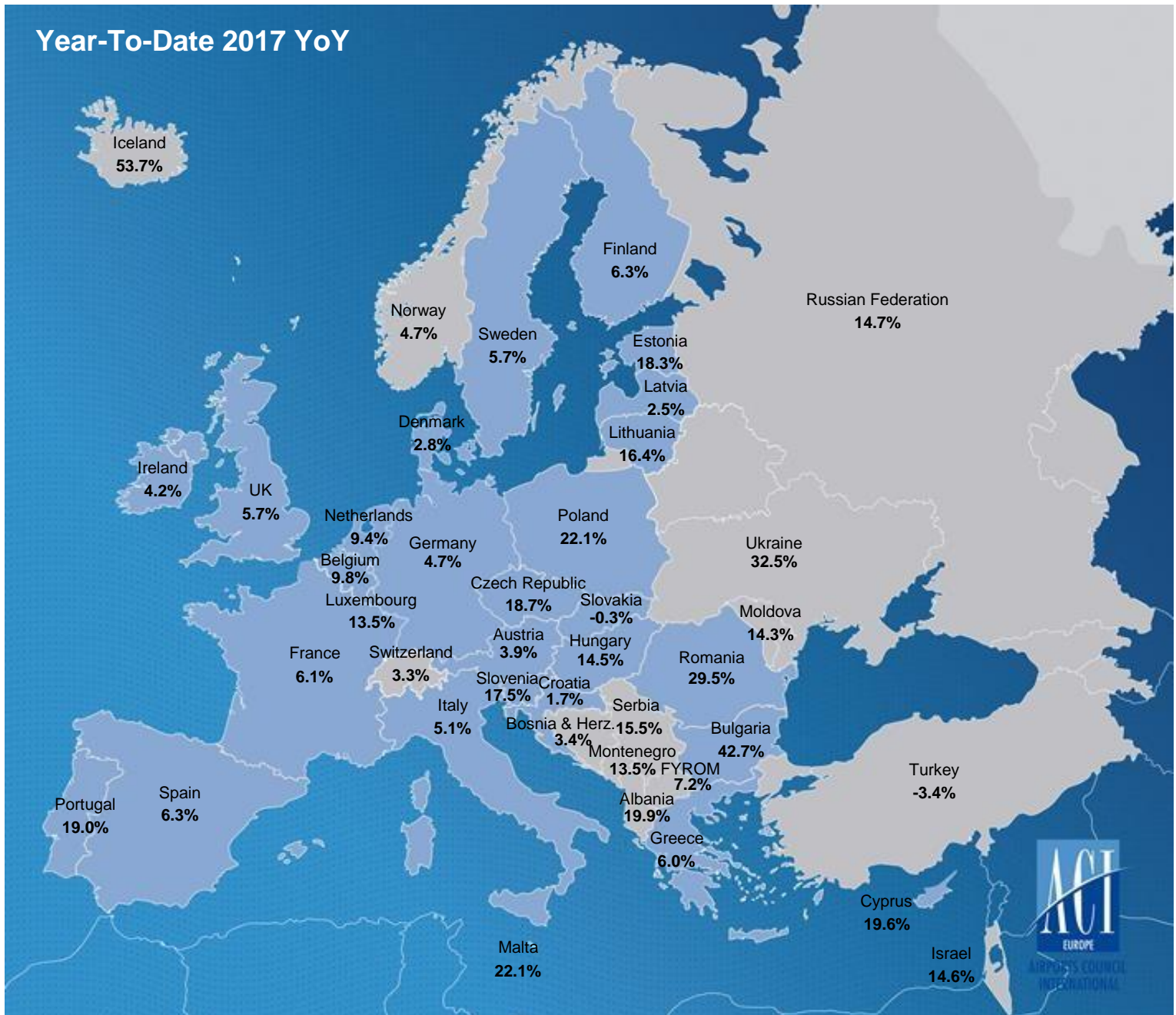
			PASSENGERS			COMMERCIAL MOVEMENTS		FREIGHT	
			Quarter 1			Quarter 1		Quarter 1	
	CITY	CODE	2017/16		2017/15	2017/16		2017/16	
181	Friedrichshafen	FDH	87,581	-11.4%	-11.0%	1,778	4.6%	0	-
182	Split	SPU	87,342	3.9%	8.9%	1,450	21.1%	47	-6.0%
183	Alta	ALF	84,479	5.4%	5.7%	1,697	7.7%	131	42.4%
184	Toulon	TLN	83,531	-6.9%	-4.0%	1,277	-3.7%	0	-
185	Visby	VBY	83,202	8.0%	14.4%	1,946	6.7%	20	-4.8%
186	Turku	TKU	76,749	5.4%	12.6%	0	-	0	-
187	Dubrovnik	DBV	75,976	-5.0%	41.7%	990	-4.1%	39	-9.3%
188	Linz	LNZ	73,383	2.5%	-16.1%	1,489	4.6%	2,673	37.0%
189	Kirkenes	KKN	72,176	10.9%	12.6%	1,513	2.0%	101	13.5%
190	Vaasa	VAA	69,482	0.1%	-4.0%	0	-	0	-
191	Nis	INI	66,221	335.2%	07266.7%	270	321.9%	663	441.9%
192	Mytilene	MJT	66,172	-16.1%	11.3%	0	-	0	-
193	Kristiansund	KSU	65,151	-7.5%	-15.8%	2,039	-10.6%	28	12.0%
194	Ronneby	RNB	59,322	9.5%	19.0%	1,059	2.3%		
195	Palanga	PLQ	54,016	66.3%	93.8%	710	34.7%	0	-
196	Bardufoss	BDU	51,517	-9.6%	10.0%	466	-18.5%	20	33.3%
197	Corfou	CFU	51,310	8.3%	11.3%	0	-	0	-
198	Tivat	TIV	49,194	-5.9%	-8.2%	482	-13.3%	0	-
199	Klagenfurt	KLU	47,136	-2.3%	-3.2%	871	2.2%	0	-
200	Limoges	LIG	45,604	0.4%	-2.7%	944	-3.0%	0	-
201	Brno	BRQ	44,964	1.6%	-10.4%	791	21.1%	1,069	30.4%
202	Ostend	OST	43,527	-47.7%	23.6%	623	-35.9%	5,109	-10.5%
203	Tampere	TMP	43,365	13.1%	-33.8%	0	-	0	-
204	Hammerfest	HFT	43,313	-1.8%	39.2%	2,466	-9.3%	61	-14.1%
205	Mikonos	JMK	39,515	99.1%	151.9%	0	-	0	-
206	Ostrava	OSR	36,377	43.7%	51.2%	840	8.2%	293	99.3%
207	Svalbard	LYR	34,154	2.6%	-1.5%	562	-17.6%	58	5.5%
208	Kos	KGS	33,834	-3.6%	-5.9%	0	-	0	-
209	Floro	FRO	33,507	-14.8%	-20.2%	1,830	-25.6%	11	0.0%
210	Bourgas	BOJ	32,421	-6.1%	8.3%	346	-22.4%	3,385	8.1%
211	Bronnoysund	BNN	30,803	10.9%	4.9%	1,736	8.6%	7	40.0%
212	Mo i Rana	MQN	30,773	2.5%	15.3%	1,534	2.1%	47	46.9%
213	Stokmarknes	SKN	28,772	9.6%	5.6%	1,350	6.1%	12	0.0%
214	Leknes	LKN	28,191	11.0%	16.4%	1,181	-0.8%	11	-8.3%
215	Orsta	HOV	26,995	-0.5%	-3.8%	1,050	-7.3%	7	-22.2%
216	Vadso	VDS	26,052	31.0%	6.9%	1,613	0.4%	0	-
217	Sandnessjoen	SSJ	25,073	15.1%	16.8%	1,574	7.7%	0	-
218	Sogndal	SOG	21,730	2.3%	10.3%	1,322	2.4%	0	-
219	Forde	FDE	21,378	5.3%	3.8%	995	-5.6%	0	-
220	Liège	LGG	20,634	-79.4%	-22.6%	6,722	-10.7%	172,554	4.5%
221	Mosjoen	MJF	20,527	-0.6%	4.3%	1,351	-4.4%	0	-
222	Oradea	OMR	18,626	125.0%	282.4%	395	25.0%	0	-
223	Ohrid	OHD	14,957	29.0%	253.2%	110	12.2%	0	-
224	Zadar	ZAD	10,678	98.5%	22.5%	298	3.5%	0	-
225	Monaco	MCM	10,215	-33.1%	-33.0%	5,103	-25.2%	0	-
226	Zakynthos Island	ZTH	9,209	60.8%	104.6%	0	-	0	-
227	Kefallinia	EFL	5,778	-15.0%	-9.0%	0	-	0	-
228	Bucharest	BBU	3,630	679.0%	669.1%	301	58.4%	0	-
229	Foggia	FOG	114	0.9%	-86.9%	0	-	0	-

		PASSENGERS			COMMERCIAL MOVEMENTS		FREIGHT	
		Quarter 1			Quarter 1		Quarter 1	
CITY	CODE	2017/16	2017/15	2017/16	2017/16	2017/16	2017/16	
230 Targu Mures	TGM	102	-99.9%	3300.0%	26	-95.4%	0	-

TRAFFIC DEVELOPMENT (Year-To-Date March 2017)

	YTD 2017/2016	YTD 2017/2015	YTD 2017/2014
Total Passengers	6.9%	15.1%	21.0%
EU airports	7.2%	16.0%	22.9%
Non-EU airports	5.9%	12.0%	14.8%
Passengers International	8.2%	16.5%	22.8%
EU airports	8.4%	17.7%	25.1%
Non-EU airports	7.2%	9.1%	10.5%
Passengers Domestic	3.7%	11.9%	16.6%
EU airports	3.8%	10.2%	14.0%
Non-EU airports	3.9%	14.5%	20.8%
Freight	8.0%	11.9%	9.8%
EU airports	7.7%	10.4%	10.6%
Non-EU airports	9.2%	22.3%	19.8%
Movements	3.0%	6.6%	8.3%
EU airports	3.4%	7.5%	9.7%
Non-EU airports	1.8%	3.3%	4.1%
PAX + Freight Combined	3.1%	7.0%	8.6%
Cargo only	2.1%	-0.2%	1.4%

PASSENGER DEVELOPMENT EUROPEAN COUNTRIES (Year-To-Date 2017 YoY)



PASSENGER TRAFFIC GROWTH BY TRAFFIC CATEGORY (Year-To-Date 2017)

GROUP 1		GROUP 2		GROUP 3		GROUP 4	
Over 25 million pax		Between 10 and 25 million pax		Between 5 and 10 million pax		Less than 5 million pax	
2017/2016	2017/2015	2017/2016	2017/2015	2017/2016	2017/2015	2017/2016	2017/2015
4.3%	11.8%	9.0%	17.3%	10.0%	21.4%	9.4%	17.6%

CITY	CODE	PASSENGERS				COMMERCIAL MOVEMENTS		FREIGHT	
		YTD March2017				YTD March2017		YTD March2017	
		2017/16	2017/15	2017/16	2017/15	2017/16	2017/16	2017/16	2017/16
1	London	LHR	17,168,256	2.2%	4.9%	111,406	-0.8%	399,481	7.3%
2	Paris	CDG	14,900,508	4.3%	5.6%	107,450	0.6%	471,837	0.4%
3	Amsterdam	AMS	14,077,124	8.6%	22.1%	108,499	5.3%	420,167	8.0%
4	Frankfurt	FRA	13,124,451	1.5%	4.9%	102,039	-1.4%	508,025	6.8%
5	Istanbul	IST	12,767,229	-7.0%	-1.4%	96,317	-8.4%	213,045	6.5%
6	Madrid	MAD	11,620,196	6.0%	18.5%	85,119	0.3%	108,509	11.4%
7	Munich	MUC	9,397,939	5.3%	8.5%	88,115	5.2%	85,483	7.8%
8	London	LGW	9,148,336	10.0%	17.5%	61,068	5.5%	19,816	18.7%
9	Barcelona	BCN	9,066,149	6.8%	24.0%	62,695	2.5%	34,682	11.4%
10	Rome	FCO	8,221,013	0.8%	4.6%	63,854	-6.2%	33,455	5.7%
11	Moscow	SVO	8,132,978	16.8%	27.5%	66,170	10.1%	47,911	37.7%
12	Paris	ORY	7,082,611	6.6%	10.2%	52,200	0.2%	20,703	-25.7%
13	Istanbul	SAW	6,577,141	-1.9%	17.3%	47,440	-7.0%	15,368	8.3%
14	Copenhagen	CPH	6,229,476	2.3%	15.8%	58,472	-1.5%		
15	Moscow	DME	5,985,113	4.4%	4.7%	49,350	-1.2%	28,244	9.9%
16	Oslo	OSL	5,921,794	7.9%	13.8%	56,711	4.8%	27,871	3.9%
17	Dublin	DUB	5,826,363	4.7%	22.8%	44,916	2.1%	32,330	3.2%
18	Stockholm	ARN	5,675,540	7.8%	16.0%	54,888	7.7%	21,657	29.7%
19	Manchester	MAN	5,277,534	13.0%	23.8%	40,381	11.5%	25,391	13.5%
20	London	STN	5,276,541	0.7%	14.2%	37,477	-0.2%	34,964	1.7%
21	Lisbon	LIS	5,180,429	21.2%	30.2%	41,649	11.6%	26,247	23.9%
22	Düsseldorf	DUS	4,988,600	13.3%	14.6%	47,273	9.8%	24,020	24.3%
23	Brussels	BRU	4,970,275	16.7%	10.6%	49,471	12.1%	130,068	27.3%
24	Vienna	VIE	4,562,824	3.7%	6.1%	47,282	-2.2%	47,687	3.7%
25	Geneva	GVA	4,463,686	3.3%	10.9%	38,947	-0.2%	14,552	32.5%
26	Milan	MLX	4,438,352	11.2%	16.4%	36,697	3.5%	137,732	15.4%
27	Berlin	TXL	4,307,823	-2.4%	-1.1%	38,967	-5.4%	9,830	17.1%
28	Helsinki	HEL	4,160,376	6.1%	13.2%	40,545	2.6%	33,360	-15.0%
29	Athens	ATH	3,706,893	7.5%	24.4%	32,958	1.2%	18,145	-1.4%
30	Tel-Aviv	TLV	3,682,188	16.2%	25.0%	25,055	10.2%	80,809	6.5%
31	Hamburg	HAM	3,556,348	8.8%	12.3%	32,631	3.5%	8,664	4.2%
32	Gran Canaria	LPA	3,330,081	2.2%	14.7%	27,779	0.3%	4,413	-0.2%
33	Ankara	ESB	3,135,473	6.5%	11.8%	22,755	2.4%	2,719	-26.8%

			PASSENGERS			COMMERCIAL MOVEMENTS		FREIGHT	
			YTD March2017			YTD March2017		YTD March2017	
	CITY	CODE	2017/16		2017/15	2017/16		2017/16	
34	Warsaw	WAW	2,982,583	28.5%	37.6%	34,655	13.2%	18,772	27.0%
35	Málaga	AGP	2,975,640	13.6%	34.2%	21,379	9.5%	537	10.3%
36	St Petersburg	LED	2,934,813	26.8%	18.9%	30,991	20.7%	5,897	20.2%
37	Tenerife	TFS	2,895,178	7.4%	17.6%	17,685	7.1%	754	3.4%
38	Berlin	SXF	2,775,928	15.9%	66.0%	21,133	13.3%	2,000	20.1%
39	Prague	PRG	2,718,889	18.8%	35.2%	26,061	7.2%	16,439	23.4%
40	Izmir	ADB	2,685,542	0.8%	5.7%	17,561	1.8%	3,655	-30.2%
41	Bucharest	OTP	2,599,027	21.4%	43.7%	25,165	10.9%	7,721	10.4%
42	Milan	BGY	2,593,878	8.7%	19.9%	17,909	5.9%	30,260	8.1%
43	Budapest	BUD	2,550,070	14.5%	29.6%	20,211	5.9%	19,407	21.9%
44	Birmingham	BHX	2,489,220	12.0%	26.2%	23,578	11.0%	10,137	93.8%
45	Palma De Mallorca	PMI	2,470,326	-2.0%	15.4%	22,273	0.0%	2,209	1.4%
46	Cologne	CGN	2,334,356	4.0%	33.2%	27,273	2.3%	192,452	6.6%
47	Alicante	ALC	2,277,767	11.7%	36.4%	16,670	12.8%	1,644	23.4%
48	Milan	LIN	2,180,512	4.3%	7.5%	22,948	-0.5%	3,341	11.5%
49	Lyon	LYS	2,156,212	11.2%	16.4%	25,238	5.0%	14,145	8.7%
50	Porto	OPO	2,125,556	19.9%	40.9%	18,011	15.5%	8,731	15.5%
51	Antalya	AYT	2,098,972	-8.8%	-15.7%	15,015	-2.7%	2,027	13.0%
52	Kiev	KBP	1,999,415	32.2%	136.2%	17,802	24.8%	7,939	28.3%
53	Toulouse	TLS	1,997,208	15.4%	17.9%	20,744	8.7%	19,017	11.8%
54	Stuttgart	STR	1,944,338	-0.1%	6.6%	20,256	-5.6%	6,414	23.0%
55	Glasgow	GLA	1,907,898	6.3%	19.0%	18,966	4.9%	2,791	4.1%
56	Marseille	MRS	1,781,160	5.9%	7.4%	20,526	2.1%	14,334	2.8%
57	Venice	VCE	1,779,736	7.4%	18.8%	16,201	2.8%	11,313	7.1%
58	Lanzarote	ACE	1,670,187	8.1%	18.5%	13,114	8.1%	446	5.9%
59	Bologna	BLQ	1,637,501	4.6%	21.3%	14,317	1.1%	10,291	12.0%
60	Keflavik	KEF	1,563,902	53.7%	110.2%	10,384	39.8%	11,559	-0.9%
61	Charleroi	CRL	1,521,082	-0.6%	12.9%	9,843	-3.7%	19	-13.6%
62	Basel	BSL	1,460,714	3.4%	10.2%	14,680	0.7%	15,367	22.0%
63	Sofia	SOF	1,441,037	46.9%	66.3%	12,162	27.6%	4,246	-3.2%
64	Rome	CIA	1,414,080	4.7%	13.0%	8,823	1.3%	4,031	3.3%
65	Göteborg	GOT	1,406,355	3.2%	10.8%	15,175	-2.3%	3,395	27.2%
66	Fuerteventura	FUE	1,387,121	3.4%	20.5%	10,625	2.9%	231	-0.4%
67	Adana	ADA	1,302,406	-1.8%	7.5%	9,510	-1.9%	987	-26.8%
68	Bergen	BGO	1,275,365	-0.5%	-0.2%	19,164	-3.8%	795	0.1%
69	Valencia	VLC	1,193,668	13.0%	31.9%	10,661	-0.4%	3,422	13.9%
70	Bordeaux	BOD	1,185,182	10.5%	14.9%	11,814	5.4%	2,575	1.1%
71	Naples	NAP	1,178,337	9.8%	13.2%	10,466	4.4%	1,695	8.7%
72	Krakow	KRK	1,163,571	19.1%	41.1%	9,460	14.5%	154	20.3%
73	Riga	RIX	1,132,973	2.5%	14.8%	14,593	1.5%	2,653	-12.9%
74	Thessaloniki	SKG	1,131,804	4.8%	15.7%				
75	Eindhoven	EIN	1,106,081	19.8%	36.1%	7,209	15.0%		
76	Sevilla	SVQ	1,067,316	8.9%	23.4%	7,798	-0.6%	1,759	15.1%
77	Turin	TRN	1,038,247	7.6%	20.1%	9,608	5.3%	116	-65.6%
78	Trondheim	TRD	1,018,485	2.2%	5.0%	13,115	3.7%	415	16.2%
79	Malta	MLA	988,340	22.1%	40.8%	7,826	19.8%	3,684	9.6%
80	Hanover	HAJ	979,658	-2.8%	0.5%	10,724	-5.6%	2,455	29.7%
81	Tenerife	TFN	963,014	-0.4%	18.5%	12,340	-0.2%	3,418	16.8%
82	Belgrade	BEG	957,455	9.9%	7.6%	11,644	0.8%	3,697	17.5%

			PASSENGERS			COMMERCIAL MOVEMENTS		FREIGHT	
			YTD March2017			YTD March2017		YTD March2017	
CITY	CODE		2017/16	2017/15		2017/16		2017/16	
83	Palermo	PMO	953,293	-0.9%	18.9%	7,826	-4.8%	65	-38.1%
84	Bilbao	BIO	950,976	5.7%	18.6%	9,356	4.0%	742	9.4%
85	Novosibirsk	OVB	940,626	27.8%	30.9%	10,102	19.6%	4,678	6.9%
86	Ekaterinburg	SVX	940,404	20.9%	26.7%	8,936	6.6%	4,405	-28.7%
87	Larnaca	LCA	931,690	26.9%	51.5%	9,169	27.8%	6,915	14.4%
88	Nantes	NTE	923,691	10.7%	39600.0%	10,723	7.4%	3,214	22.5%
89	Stavanger	SVG	915,919	-1.4%	-7.3%	15,371	-1.7%	1,102	-5.0%
90	Faro	FAO	902,507	14.4%	47.0%	6,698	11.0%	16	-11.1%
91	Bari	BRI	895,392	6.6%	14.8%	6,905	3.4%	68	-88.1%
92	Vilnius	VNO	834,959	14.4%	33.4%	9,080	8.1%	1,958	18.5%
93	Trabzon	TZX	802,940	4.5%	19.1%	5,260	5.7%	554	97.9%
94	East Midlands	EMA	730,169	7.6%	11.9%	11,973	1.7%	75,448	2.1%
95	Nürnberg	NUE	729,840	22.8%	15.8%	9,768	13.0%	1,712	25.3%
96	Aberdeen	ABZ	665,892	-1.3%	-15.7%	20,030	-4.1%	1,470	-6.8%
97	Salzburg	SZG	665,627	4.2%	6.2%	6,157	2.3%	53	0.0%
98	Funchal	FNC	664,405	10.1%	22.2%	5,603	13.6%	635	-2.3%
99	Luxembourg	LUX	657,916	13.5%	39.3%	13,650	6.4%	200,337	15.1%
100	Cagliari	CAG	628,513	2.2%	10.2%	4,560	-5.7%	362	-21.1%
101	Stockholm	BMA	604,180	4.3%	2.7%	11,576	4.7%		
102	Billund	BLL	601,325	8.5%	44066.7%	7,893	2.0%	16,906	13.3%
103	Treviso	TSF	599,692	5.3%	89633.3%	3,644	1.9%		
104	Katowice	KTW	570,134	9.6%	22.4%	5,036	6.2%	3,853	6.2%
105	Tromsø	TOS	566,816	9.9%	16.3%	8,459	5.3%	409	10.5%
106	Rostov	ROV	553,129	38.6%	37533.3%	4,716	10.8%	979	8.7%
107	Verona	VRN	522,430	8.3%	21.9%	4,839	-1.4%	1,039	-6.8%
108	Cluj	CLJ	518,902	60.1%	81.3%	5,503	52.1%	825	79.3%
109	Zagreb	ZAG	513,667	1.4%	7.9%	7,595	-5.4%	1,205	-4.4%
110	Tirana	TIA	508,041	19.9%	31.7%	4,854	7.2%	404	3.3%
111	Malmö	MMX	498,526	1.7%	12.3%	6,190	2.9%	6,656	-12.7%
112	Tallinn	TLL	489,305	18.3%	18.3%	8,357	11.9%	2,109	-3.0%
113	Ibiza	IBZ	485,468	8.1%	26.6%	5,713	2.8%	312	-4.6%
114	Florence	FLR	484,841	7.5%	15.0%	5,529	3.0%	12	-20.0%
115	Samara	KUF	480,385	15.6%	12733.3%	2,566	0.0%	618	15.7%
116	Chisinau	KIV	466,800	14.3%	22.8%	5,234	21.4%	526	23.2%
117	Bremen	BRE	448,565	-10.4%	-12.8%			169	-6.6%
118	Southampton	SOU	424,424	12.2%	9.2%	8,808	14.2%	42	-10.6%
119	Bodo	BOO	421,519	6.6%	10.3%	9,079	4.8%	285	9.2%
120	Cork	ORK	418,248	-0.1%	10.2%	3,963	-5.6%	7	40.0%
121	Brindisi	BDS	415,172	-4.1%	-0.8%	2,989	-6.2%		
122	Vladivostok	VVO	403,662	0.9%	55300.0%	2,142	16.0%		
123	Pristina	PRN	357,339	0.0%	18.9%	2,744	-4.3%	203	0.5%
124	Timisoara	TSR	355,242	69.3%	83.2%	4,018	48.4%	952	2.8%
125	Skopje	SKP	354,045	6.4%	34.0%	3,143	-1.1%	515	-30.0%
126	Stockholm	NYO	348,377	-5.3%	20.5%	2,608	-7.5%	58	1.8%
127	Eilath	ETH	337,078	-0.6%	1.2%	3,485	-3.8%		
128	Lille	LIL	311,002	1.7%	76.2%	4,384	18.3%	8,829	4.4%
129	Poznan	POZ	308,906	4.4%	96766.7%	3,084	-1.8%	26	30.0%
130	Ponta Delgada	PDL	302,864	11.1%	74.8%	3,588	21.5%	1,035	5.4%
131	Shannon	SNN	299,739	1.4%	16.7%	2,594	0.1%	3,586	30.0%

			PASSENGERS			COMMERCIAL MOVEMENTS		FREIGHT	
			YTD March2017			YTD March2017		YTD March2017	
CITY		CODE	2017/16		2017/15	2017/16		2017/16	
132	Bratislava	BTS	298,165	-0.3%	264.3%	2,999	-4.0%	5,672	5.9%
133	Chelyabinsk	CEK	288,886	4.2%	29433.3%	1,228	-5.3%	593	9.2%
134	Ljubljana	LJU	288,355	17.5%	22.0%	5,289	11.2%	2,388	12.9%
135	Luleå	LLA	285,119	3.1%	8.1%	2,759	0.4%	135	8.0%
136	Paphos	PFO	274,913	0.3%	6.9%	1,925	3.6%	196	335.6%
137	Bodrum	BJV	264,553	5.2%	18.8%	1,746	1.4%	23	76.9%
138	Oulu	OUL	249,054	3.2%	6.5%				
139	Umeå	UME	247,969	0.2%	7.3%	4,119	7.2%	93	5.7%
140	Heraklion	HER	245,795	8.0%	18.6%				
141	Grenoble	GNB	244,339	7.8%	9.6%	2,569	19.5%		
142	Iasi	IAS	232,615	61.8%	53733.3%	2,547	33.9%	6	100.0%
143	Menorca	MAH	229,809	7.8%	33.5%	3,397	-6.2%	318	1.6%
144	Kristiansand	KRS	229,443	0.4%	-3.4%	3,831	-0.6%	82	-61.1%
145	Aalesund	AES	226,249	-1.6%	-6.6%	2,955	-4.1%	74	-5.1%
146	Odessa	ODS	221,494	27.1%	33033.3%	2,342	34.7%	131	0.8%
147	Memmingen	FMM	217,601	31.1%	67.9%	1,422	26.2%		
148	Brest	BES	215,294	1.8%	2.0%	3,305	6.4%	730	-4.7%
149	Chania	CHQ	215,148	-3.1%	13.5%				
150	Biarritz	BIQ	204,423	12.2%	15.0%	2,220	23.9%		
151	Strasbourg	SXB	203,382	-10.0%	-10.9%	4,377	-8.2%	16	60.0%
152	Graz	GRZ	197,665	8.2%	18.9%	3,269	8.2%	42	-38.2%
153	Volgograd	VOG	193,946	10.6%	24.6%	782	13.2%	177	12.0%
154	Rovaniemi	RVN	182,777	17.9%	30.5%				
155	Isle Of Man	IOM	180,004	-0.6%	9.8%	4,947	-21.9%	73	-2.7%
156	Kaunas	KUN	174,865	15.3%	288.9%	1,779	23.5%	176	000.0%
157	Rhodes	RHO	169,038	0.8%	18.7%				
158	Mugla	DLM	167,343	13.2%	42.3%	1,148	8.7%	10	0.0%
159	Ajaccio	AJA	164,816	3.7%	8.7%			1,297	10.2%
160	Harstad	EVE	158,582	2.8%	13.4%	2,126	6.1%	121	13.1%
161	Trieste	TRS	157,617	7.5%	12.5%	1,987	6.8%	7	-70.8%
162	Podgorica	TGD	153,589	21.5%	31.9%	1,390	8.7%	126	-3.1%
163	Ostersund	OSD	153,328	8.9%	19.4%	2,122	1.8%	26	13.0%
164	Pau	PUF	145,155	0.2%	0.6%	2,376	10.3%	180	-33.8%
165	Sarajevo	SJJ	141,880	3.4%	6.0%	1,980	-0.1%	724	119.4%
166	Girona	GRO	140,298	-18.3%	-14.7%	958	-23.1%	10	-28.6%
167	Haugesund	HAU	139,870	2.4%	-4.1%	1,494	-8.1%	52	2.0%
168	Bacau	BCM	139,586	37.9%	52766.7%	1,419	28.0%	6	100.0%
169	Chambery	CMF	138,831	-18.8%	17.2%	4,307	4.2%		
170	Kharkiv	HRK	134,849	48.3%	833.0%	1,302	31.2%	52	-29.7%
171	Tomsk	TOF	126,900	40.4%	29.6%	1,026	37.9%	397	19.6%
172	Muenster	FMO	116,244	-0.5%	-2.5%	1,901	1.4%	9	-72.7%
173	Astrakhan	ASF	115,080	0.7%	31.3%	763	-1.2%	175	2.9%
174	Molde	MOL	110,794	-4.1%	5.9%	1,886	-0.7%	68	-1.4%
175	Bournemouth	BOH	108,766	13.1%	55.3%	714	-13.7%	4	-42.9%
176	Sibiu	SBZ	103,770	59.9%	72.5%	1,333	27.3%	5	-50.0%
177	Santorini Thira	JTR	101,532	-7.9%	109.4%				
178	Angelholm	AGH	96,900	6.5%	8.5%	1,649	11.7%		
179	Varna	VAR	93,612	13.4%	40.0%	1,014	5.2%	117	485.0%
180	Kiruna	KRN	87,791	12.2%	9.2%	833	14.4%	20	11.1%

			PASSENGERS			COMMERCIAL MOVEMENTS		FREIGHT	
			YTD March2017			YTD March2017		YTD March2017	
CITY	CODE		2017/16	2017/15		2017/16		2017/16	
181	Friedrichshafen	FDH	87,581	-11.4%	-11.0%	1,778	4.6%		
182	Split	SPU	87,342	3.9%	8.9%	1,450	21.1%	47	-6.0%
183	Alta	ALF	84,479	5.4%	5.7%	1,697	7.7%	131	42.4%
184	Toulon	TLN	83,531	-6.9%	-4.0%	1,277	-3.7%		
185	Visby	VBY	83,202	8.0%	14.4%	1,946	6.7%	20	-4.8%
186	Turku	TKU	76,749	5.4%	12.6%				
187	Dubrovnik	DBV	75,976	-5.0%	41.7%	990	-4.1%	39	-9.3%
188	Linz	LNZ	73,383	2.5%	-16.1%	1,489	4.6%	2,673	37.0%
189	Kirkenes	KKN	72,176	10.9%	12.6%	1,513	2.0%	101	13.5%
190	Vaasa	VAA	69,482	0.1%	-4.0%				
191	Nis	INI	66,221	335.2%	07266.7%	270	321.9%	663	441.9%
192	Mytilene	MJT	66,172	-16.1%	11.3%				
193	Kristiansund	KSU	65,151	-7.5%	-15.8%	2,039	-10.6%	28	12.0%
194	Ronneby	RNB	59,322	9.5%	19.0%	1,059	2.3%	3	-25.0%
195	Palanga	PLQ	54,016	66.3%	93.8%	710	34.7%		
196	Bardufoss	BDU	51,517	-9.6%	10.0%	466	-18.5%	20	33.3%
197	Corfou	CFU	51,310	8.3%	11.3%				
198	Tivat	TIV	49,194	-5.9%	-8.2%	482	-13.3%		
199	Klagenfurt	KLU	47,136	-2.3%	-3.2%	871	2.2%		
200	Limoges	LIG	45,604	0.4%	-2.7%	944	-3.0%		
201	Brno	BRQ	44,964	1.6%	-10.4%	791	21.1%	1,069	30.4%
202	Ostend	OST	43,527	-47.7%	23.6%	623	-35.9%	5,109	-10.5%
203	Tampere	TMP	43,365	13.1%	-33.8%				
204	Hammerfest	HFT	43,313	-1.8%	39.2%	2,466	-9.3%	61	-14.1%
205	Mikonos	JMK	39,515	99.1%	151.9%				
206	Ostrava	OSR	36,377	43.7%	51.2%	840	8.2%	293	99.3%
207	Svalbard	LYR	34,154	2.6%	-1.5%	562	-17.6%	58	5.5%
208	Kos	KGS	33,834	-3.6%	-5.9%				
209	Floro	FRO	33,507	-14.8%	-20.2%	1,830	-25.6%	11	0.0%
210	Bourgas	BOJ	32,421	-6.1%	8.3%	346	-22.4%	3,385	8.1%
211	Bronnoysund	BNN	30,803	10.9%	4.9%	1,736	8.6%	7	40.0%
212	Mo i Rana	MQN	30,773	2.5%	15.3%	1,534	2.1%	47	46.9%
213	Stokmarknes	SKN	28,772	9.6%	5.6%	1,350	6.1%	12	0.0%
214	Leknes	LKN	28,191	11.0%	16.4%	1,181	-0.8%	11	-8.3%
215	Orsta	HOV	26,995	-0.5%	-3.8%	1,050	-7.3%	7	-22.2%
216	Vadso	VDS	26,052	31.0%	6.9%	1,613	0.4%		
217	Sandnessjoen	SSJ	25,073	15.1%	16.8%	1,574	7.7%		
218	Sogndal	SOG	21,730	2.3%	10.3%	1,322	2.4%		
219	Forde	FDE	21,378	5.3%	3.8%	995	-5.6%		
220	Liège	LGG	20,634	-79.4%	-22.6%	6,722	-10.7%	172,554	4.5%
221	Mosjoen	MJF	20,527	-0.6%	4.3%	1,351	-4.4%		
222	Oradea	OMR	18,626	125.0%	282.4%	395	25.0%		
223	Ohrid	OHD	14,957	29.0%	253.2%	110	12.2%		
224	Zadar	ZAD	10,678	98.5%	22.5%	298	3.5%		
225	Monaco	MCM	10,215	-33.1%	-33.0%	5,103	-25.2%		
226	Zakynthos Island	ZTH	9,209	60.8%	104.6%				
227	Kefallinia	EFL	5,778	-15.0%	-9.0%				
228	Bucharest	BBU	3,630	679.0%	669.1%	301	58.4%		
229	Foggia	FOG	114	0.9%	-86.9%				

		PASSENGERS		COMMERCIAL MOVEMENTS		FREIGHT	
		YTD March2017		YTD March2017		YTD March2017	
CITY	CODE	2017/16	2017/15	2017/16	2017/16	2017/16	2017/16
230 Targu Mures	TGM	102	-99.9% 3300.0%	26	-95.4%		

ФОРМУЛИРОВКИ

Пассажиры

Прибыльные или неприбыльные пассажиры, прибывающие или вылетающие на коммерческих самолётах или вертолётах на запланированные или незапланированные рейсы.

Местные

Перевозка (пассажиров или грузов) выполняемая между аэропортами, расположенными в пределах одной страны или территории.

Международные

Перевозка (пассажиров или грузов) выполняемая между назначенными аэропортами, расположенными в другой стране или территории.

Грузы

Грузы эта любая собственность, перевозимая на самолётах отличающаяся от почты, хранилищ и багажа.

Передвижение/Движение самолёта

Передвижение это посадка или взлёт самолёта или вертолёта в аэропорту по расписанию или без.

Только грузы

Передвижение самолётов или вертолётов для доставки коммерческих грузов и/или почты, но не пассажиров (исключая воздушное такси и деловые полёты).

Комбинированные пассажирские и грузовые полёты

Передвижение самолётов или вертолётов для доставки коммерческих грузов и/или почты, включая перевозку пассажиров (исключая воздушное такси и деловые полёты).

Географический охват

Европа

Включает все страны и территории на европейском континенте.

Евросоюз

Включает все аэропорты, находящиеся в 28 странах - членах европейского союза.

Неевропейские регионы

Включает все европейские страны, не являющиеся членами Европейского союза. В данный момент в неевропейские регионы входят: Албания, Беларусь, Босния и Герцеговина, Бывшая Югославская республика Македония, Грузия, Исландия, Израиль, Черногория, Норвегия, Российская Федерация, Сербия, Швейцария, Турция и Украина.





Airports Council International has been tracking airport traffic data for over 25 years. As part of that, here in Europe ACI EUROPE has published a dedicated airport traffic report every month for over 10 years. The data available comprises the most comprehensive reporting of passenger traffic figures available (including the network, low cost, charter and other airlines) as well as freight figures and aircraft movements. The report also provides insights into the average traffic performance in the various countries in continental Europe and a breakdown of the average growth in our 4 traffic categories for airports).

ACI EUROPE is the European region of Airports Council International (ACI), the only worldwide professional association of airport operators. ACI EUROPE represents close to **500 airports** in 45 European countries. In 2015, our member airports handled over 90% of commercial air traffic in Europe, welcoming more than **1.9 billion passengers, 18.9 million tonnes of freight** and **22.8 million aircraft movements**. These airports contribute to the employment of **12.3 million people**, generating **€675 billion** each year (**4.1%**) of GDP in Europe.

EVERY FLIGHT BEGINS AT THE AIRPORT.

www.aci-europe.org

Twitter: @ACI_EUROPE

Produced by ACI EUROPE

© Copyright ACI EUROPE 2017