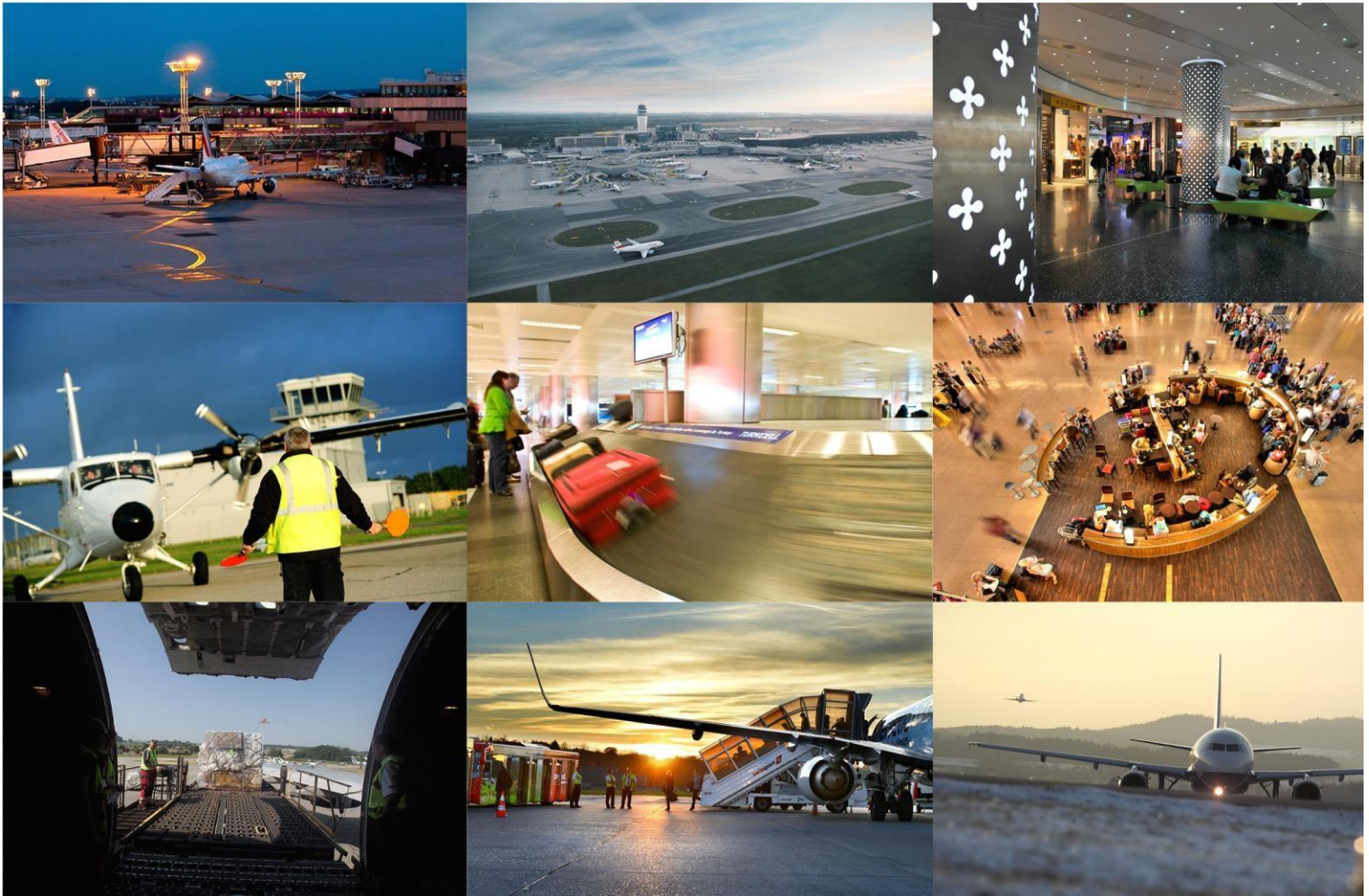




ACI EUROPE AIRPORT TRAFFIC REPORT

SOURCE: ACI WORLD & ACI EUROPE

Февраль 2017



Рекордный рост трафика в аэропортах продолжился и в Феврале

Для немедленной публикации

7 Апреля 2017

Брюссель, 7 апреля 2017: Европейская ассоциация аэропортов ACI EUROPE, публикует сегодня свой отчёт по трафику **за Февраль 2017 года** – новейший показатель эффективности работы европейских аэропортов.

Средний **объём пассажирских перевозок** в географической Европе вырос на **+5.2%** в течение февраля, по сравнению с аналогичным периодом прошлого года. В то время как европейские аэропорты продолжают возглавлять стабильный динамический рост (**+5.5%**), разница в приросте эффективности по сравнению с аэропортами не входящими в Европейский Союз (**+4.2%**) уменьшается, в частности благодаря значительному улучшению показателей производительности российских аэропортов, а также устойчивому росту в Исландии, Украине и Грузии. Однако пассажирооборот в Турции продолжает снижаться, хоть и медленнее, чем в предыдущие месяцы.

Большинство менее развитых рынков в восточной части Европейского Союза, а также Кипр, Люксембург, Мальта и Португалия сообщили о двузначном росте объёма пассажирских перевозок.

Хоть эти темпы роста и ниже, чем в январе, следует также принимать во внимание, что в феврале прошлого года был дополнительный 'високосный' день. Соответственно, при скорректированном сравнении (основанном на 28 днях), объём пассажирооборота по всей Европе фактически вырос на +9%, с ростом рынка Европейского Союза на +9.3% и ростом неевропейского региона на +7.9%.

Объём грузовых перевозок вырос на **+3.4%** (+6.7% при корректировке) в то время как **движения самолётов** остались практически на прежнем уровне **-0.4%** (+3.4% при корректировке).

В течение **Февраля**, аэропорты, принимающие более чем 25 миллионов пассажиров в год (Группа 1), аэропорты, принимающие от 10 до 25 миллионов пассажиров (Группа 2), аэропорты, принимающие от 5 до 10 миллионов пассажиров (Группа 3) и аэропорты, принимающие менее 5 миллионов пассажиров в год (Группа 4), сообщили о средней регулировке на **+3.2%**, **+6.6%**, **+8.1%** и **+7.6%**.

Аэропорты, сообщившие о наибольшем повышении пассажирооборота в Феврале 2017 (по сравнению с Февралём 2016) прилагаются ниже:

ГРУППА 1: Москва-Шереметьево (**+15.4%**), Манчестер (**+11.5%**), Лондон Гатвик (**+9.9%**), Цюрих (**+6.8%**) и Амстердам (**+5.8%**)

ГРУППА 2: Санкт-Петербург (**+27.8%**), Варшавский аэропорт имени Фредерика Шопена (**+26.6%**), Лиссабон (**+20%**), Прага (**+17.8%**) и Берлин-Шёнефельд (**+16.1%**)

ГРУППА 3: Кефлавик (**+50.1%**), Киев (**+29.8%**), Ларнака (**+28%**), Мальта (**+25.1%**) и Фаро (**+24.5%**)

ГРУППА 4: Международный аэропорт Бухарест Бэняса имени Ауреля Влайку (**+1,041.9%**), Ниш (**+354.4%**), Арад (**+133.3%**), Миконос (**+113.3%**) и Орадеа (**+111%**)

'Отчёт международного совета аэропортов о трафике аэропортов за февраль 2017 года' включает в себя в общей сложности 235 аэропортов, что составляет более чем 88% европейского воздушного трафика.

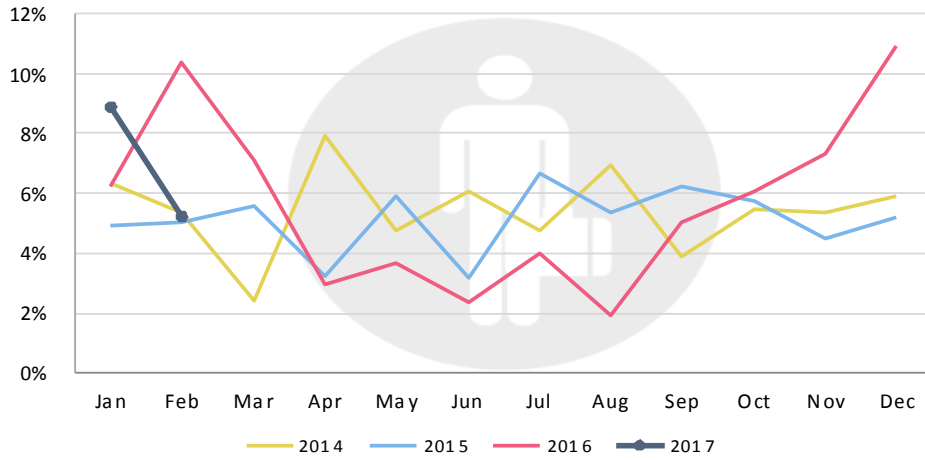
Отчёт о трафике аэропортов публикуемый ACI EUROPE уникален тем, что является единственным отчётом, включающим в себя все типы пассажирских рейсов в, из и внутри Европы: стоимость обслуживания, проводимые рейсы и многое другое.



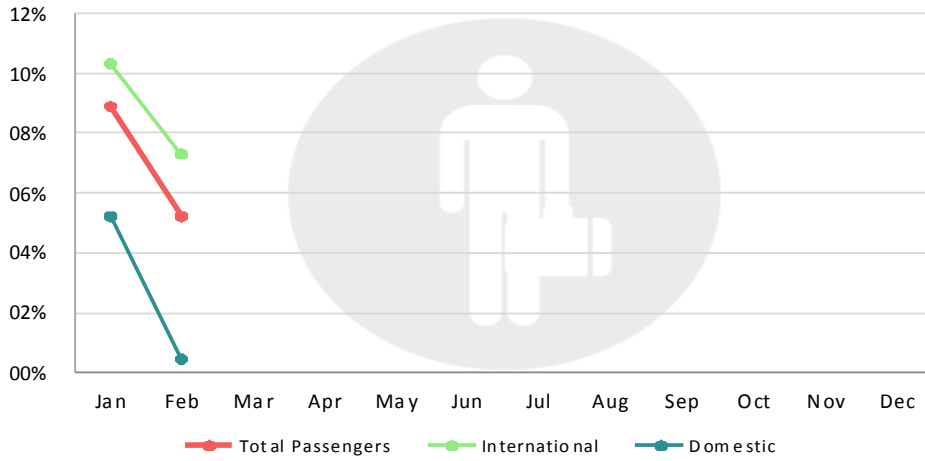
EXECUTIVE SUMMARY (February 2017)

	February 2017/2016	YTD 2017
Total Passengers	5.2%	7.1%
EU airports	5.5%	7.7%
Non-EU airports	4.2%	4.9%
Passengers International	7.3%	8.8%
EU airports	7.3%	9.2%
Non-EU airports	7.1%	7.2%
Passengers Domestic	0.4%	2.8%
EU airports	0.2%	3.4%
Non-EU airports	0.8%	2.0%
Freight	3.4%	5.4%
EU airports	2.7%	4.8%
Non-EU airports	4.7%	9.1%
Movements	-0.2%	2.3%
EU airports	-0.1%	2.8%
Non-EU airports	-0.4%	1.0%
PAX + Freight Combined	0.2%	2.5%
Cargo only	-7.7%	-1.5%

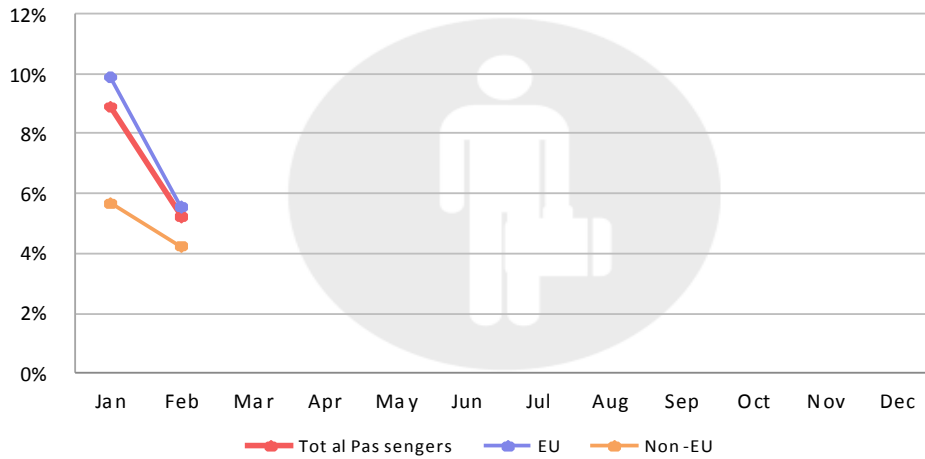
TOTAL PASSENGER DEVELOPMENT (Year-on-year changes)



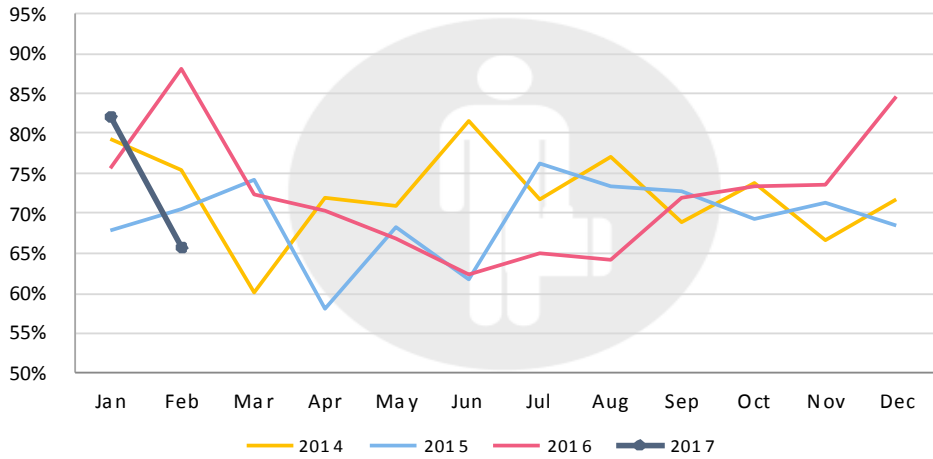
INTERNATIONAL & DOMESTIC PASSENGERS



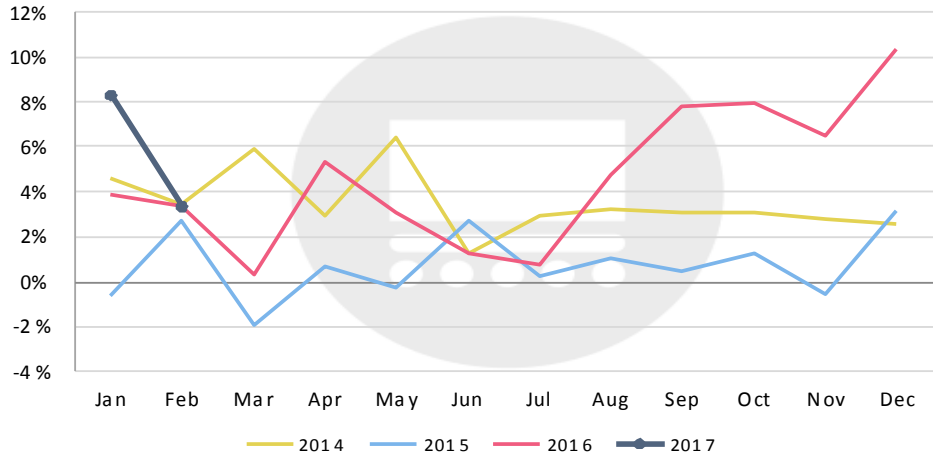
EU/NON-EU AIRPORTS PASSENGER TRAFFIC



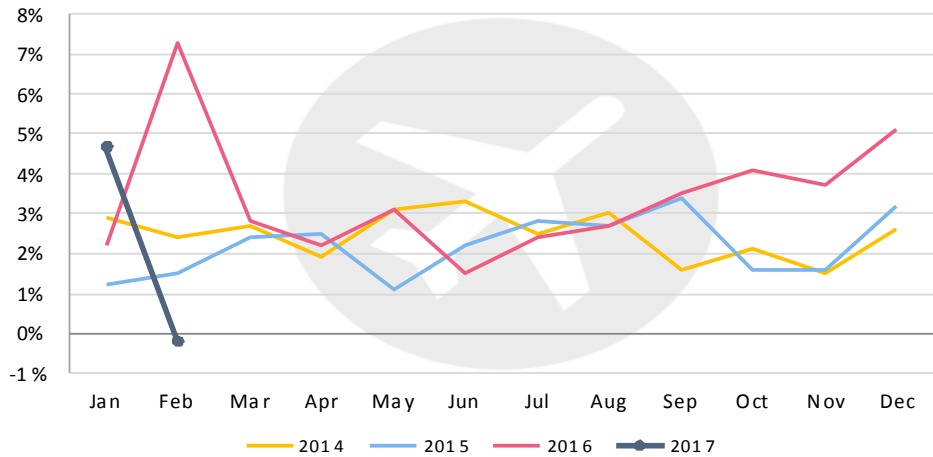
PERCENTAGE OF AIRPORTS WITH INCREASING PASSENGER TRAFFIC



TOTAL FREIGHT DEVELOPMENT



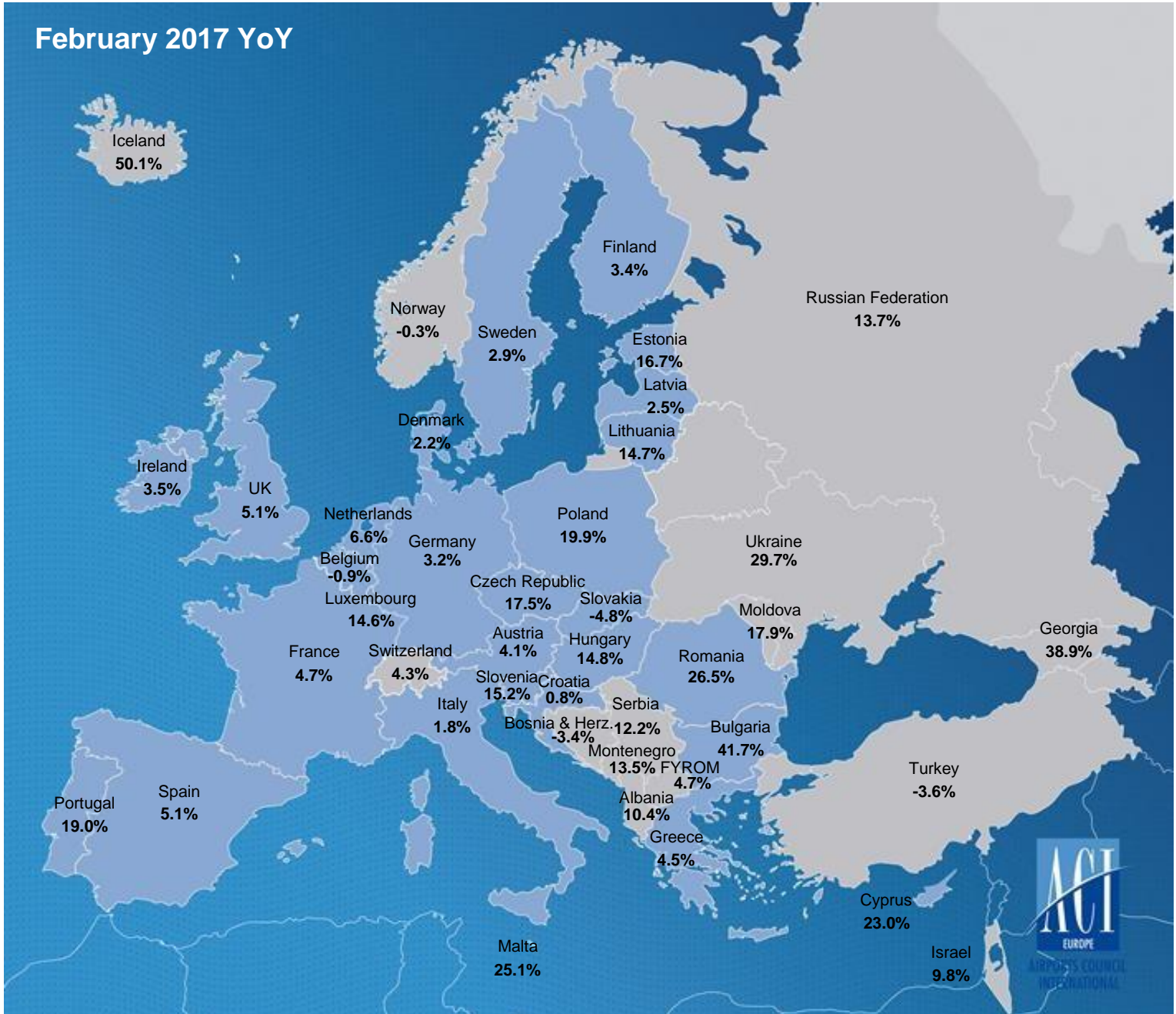
TOTAL MOVEMENTS DEVELOPMENT



TRAFFIC DEVELOPMENT (February 2017)

	February 2017/2016	February 2017/2015	February 2017/2014
Total Passengers	5.2%	15.8%	21.5%
EU airports	5.5%	16.6%	23.8%
Non-EU airports	4.2%	13.1%	14.5%
Passengers International	7.3%	17.7%	24.0%
EU airports	7.3%	18.8%	26.7%
Non-EU airports	7.1%	12.9%	12.4%
Passengers Domestic	0.4%	11.4%	15.1%
EU airports	0.2%	9.6%	13.2%
Non-EU airports	0.8%	14.3%	18.2%
Freight	3.4%	7.5%	10.2%
EU airports	2.7%	5.9%	8.8%
Non-EU airports	4.7%	18.7%	19.4%
Movements	-0.2%	6.5%	8.0%
EU airports	-0.1%	7.0%	9.2%
Non-EU airports	-0.4%	5.1%	4.5%
PAX + Freight Combined	0.2%	6.9%	8.2%
Cargo only	-7.7%	-4.0%	-2.3%

PASSENGER DEVELOPMENT EUROPEAN COUNTRIES (February 2017 YoY)



PASSENGER TRAFFIC GROWTH BY TRAFFIC CATEGORY (February 2017)

GROUP 1		GROUP 2		GROUP 3		GROUP 4	
Over 25 million pax		Between 10 and 25 million pax		Between 5 and 10 million pax		Less than 5 million pax	
2017/2016	2017/2015	2017/2016	2017/2015	2017/2016	2017/2015	2017/2016	2017/2015
3.2%	12.8%	6.6%	17.8%	8.1%	22.2%	7.6%	17.9%

			PASSENGERS		COMMERCIAL MOVEMENTS		FREIGHT		
			February		February		February		
	CITY	CODE	2017/16	2017/15	2017/16	2017/16	2017/16	2017/16	
1	London	LHR	5,268,516	1.7%	6.3%	34,872	-3.6%	126,812	4.4%
2	Paris	CDG	4,624,896	3.5%	6.3%	33,366	-1.5%	143,416	-5.9%
3	Amsterdam	AMS	4,334,892	5.8%	20.2%	33,400	1.3%	131,450	7.0%
4	Frankfurt	FRA	4,024,742	1.0%	4.9%	31,901	-4.3%	153,870	2.2%
5	Istanbul	IST	4,021,718	-4.7%	2.0%	30,621	-7.0%	65,852	1.5%
6	Madrid	MAD	3,582,280	3.5%	19.5%	26,358	-5.3%	34,879	7.6%
7	London	LGW	2,959,409	9.9%	19.8%	19,432	4.5%	5,965	6.0%
8	Munich	MUC	2,950,566	3.9%	8.8%	27,900	0.4%	26,485	1.7%
9	Barcelona	BCN	2,798,476	4.8%	26.2%	19,279	-1.5%	10,682	3.2%
10	Moscow	SVO	2,534,959	15.4%	28.9%	20,544	7.8%	13,319	19.3%
11	Rome	FCO	2,494,305	-2.7%	5.1%	19,532	-9.4%	10,072	0.4%
12	Paris	ORY	2,250,358	5.6%	11.4%	16,582	-2.4%	6,640	-29.7%
13	Istanbul	SAW	2,059,651	-5.5%	17.4%	15,058	-8.6%	4,553	-4.4%
14	Copenhagen	CPH	1,978,519	1.9%	18.2%	18,192	-5.8%		
15	Oslo	OSL	1,884,746	3.6%	12.3%	17,583	-2.3%	8,698	-0.9%
16	Zürich	ZRH	1,876,177	6.8%	12.5%	17,822	-1.5%	25,628	10.5%
17	Moscow	DME	1,817,757	3.4%	8.5%	15,013	-3.4%	9,169	5.5%
18	Dublin	DUB	1,790,857	3.9%	21.8%	13,755	-0.7%	9,828	-4.2%
19	Stockholm	ARN	1,770,878	5.4%	14.6%	16,968	1.5%	6,508	23.2%
20	Manchester	MAN	1,670,672	11.5%	23.0%	12,592	7.4%	7,842	11.0%
21	London	STN	1,652,471	-2.0%	12.4%	11,533	-2.8%		
22	Lisbon	LIS	1,611,231	20.0%	33.6%	12,874	9.6%	8,073	19.1%
23	Brussels	BRU	1,562,516	-0.3%	10.8%	15,399	-4.6%	38,310	8.1%
24	Düsseldorf	DUS	1,500,918	9.0%	13.2%	14,657	5.2%	7,630	22.5%
25	Geneva	GVA	1,413,105	2.2%	12.4%	12,286	-3.1%	4,684	29.6%
26	Berlin	TXL	1,392,819	-1.5%	2.2%	12,412	-7.3%	3,132	17.6%
27	Vienna	VIE	1,392,409	3.2%	7.2%	14,424	-5.3%	14,722	3.6%
28	Milan	MLX	1,354,560	7.9%	17.3%	11,171	-1.2%	41,196	10.3%
29	Helsinki	HEL	1,319,934	3.7%	13.3%	12,793	-1.6%	8,811	-31.3%
30	Athens	ATH	1,124,244	5.2%	24.2%	9,894	-1.0%	5,392	-10.7%
31	Hamburg	HAM	1,090,384	5.3%	11.9%	10,052	-1.8%	2,697	-2.6%
32	Tel-Aviv	TLV	1,087,580	11.0%	24.6%	7,509	5.3%	24,653	2.5%
33	Gran Canaria	LPA	1,049,517	1.3%	14.8%	8,662	-1.7%	1,366	-5.7%

			PASSENGERS			COMMERCIAL MOVEMENTS		FREIGHT	
			February			February		February	
	CITY	CODE	2017/16		2017/15	2017/16		2017/16	
34	Ankara	ESB	985,265	3.7%	11.1%	7,288	2.1%	676	-47.4%
35	Warsaw	WAW	939,030	26.6%	39.3%	10,757	9.8%	5,721	18.0%
36	Berlin	SXF	919,252	16.1%	71.1%	6,774	11.8%	546	-0.9%
37	Tenerife	TFS	917,468	6.4%	18.8%	5,545	4.1%	240	4.9%
38	Málaga	AGP	912,593	15.2%	35.5%	6,550	8.9%	172	0.6%
39	St Petersburg	LED	897,544	27.8%	22.4%	9,412	14.8%	1,782	-0.8%
40	Izmir	ADB	846,599	-0.6%	2.9%	5,613	4.1%	1,019	-41.9%
41	Prague	PRG	828,850	17.8%	36.2%	7,906	5.1%	5,094	24.1%
42	Bucharest	OTP	809,445	18.8%	44.7%	7,753	7.1%	2,407	2.8%
43	Birmingham	BHX	808,846	11.6%	28.3%	7,372	6.1%	3,014	104.1%
44	Milan	BGY	802,231	5.0%	18.5%	5,509	2.2%	9,367	0.4%
45	Budapest	BUD	784,453	14.8%	30.9%	6,199	4.7%	5,773	15.9%
46	Palma De Mallorca	PMI	720,434	1.6%	15.2%	6,564	-1.8%	681	-7.0%
47	Cologne	CGN	704,694	0.8%	33.2%	8,366	-1.3%	57,183	1.7%
48	Alicante	ALC	686,769	12.5%	36.4%	5,070	13.5%	535	13.3%
49	Milan	LIN	682,379	-0.3%	6.1%	7,148	-4.7%	1,107	10.6%
50	Lyon	LYS	681,677	6.6%	14.2%	8,044	-0.1%	4,744	3.9%
51	Porto	OPO	664,418	18.3%	43.7%	5,561	12.6%	2,775	13.5%
52	Toulouse	TLS	651,870	14.6%	19.1%	6,640	3.2%	5,936	4.7%
53	Glasgow	GLA	603,694	3.5%	18.1%	5,961	2.0%	825	6.3%
54	Antalya	AYT	601,955	-8.7%	-16.8%	4,396	-0.9%	677	15.5%
55	Kiev	KBP	601,021	29.8%	55.3%	5,505	21.7%	2,511	20.8%
56	Stuttgart	STR	585,321	-3.9%	5.7%	6,229	-9.7%	2,168	22.7%
57	Marseille	MRS	566,386	1.6%	9.8%	6,432	-2.8%	4,284	-5.0%
58	Venice	VCE	564,418	6.5%	19.1%	5,105	1.7%	3,454	-4.9%
59	Lanzarote	ACE	532,509	8.9%	20.5%	4,088	8.3%	137	2.3%
60	Keflavik	KEF	486,912	50.1%	111.4%	3,229	39.6%	3,485	-9.6%
61	Bristol	BRS	484,918	11.4%	27.1%	3,923	6.1%		
62	Charleroi	CRL	483,899	-1.0%	12.1%	2,994	-4.5%	7	-18.4%
63	Bologna	BLQ	482,509	0.9%	21.2%	4,277	-4.1%	3,321	2.6%
64	Basel	BSL	478,148	1.1%	11.9%	4,711	-2.3%		
65	Sofia	SOF	456,212	45.4%	68.6%	3,780	25.8%	1,311	-11.2%
66	Rome	CIA	446,695	1.9%	12.3%	2,757	-1.6%	1,262	3.0%
67	Göteborg	GOT	445,617	1.2%	12.0%	4,697	-9.7%	1,037	11.6%
68	Fuerteventura	FUE	438,402	1.2%	20.7%	3,275	1.0%	71	-4.7%
69	Adana	ADA	407,980	-3.3%	7.0%	3,013	-1.2%	308	-6.7%
70	Bergen	BGO	402,036	-4.4%	-3.5%	5,920	-9.2%	245	-11.6%
71	Bordeaux	BOD	372,098	5.1%	13.6%	3,649	-1.4%	768	-6.4%
72	Naples	NAP	367,223	10.7%	16.1%	3,244	4.0%	500	-7.4%
73	Valencia	VLC	364,085	11.0%	32.7%	3,225	-7.7%	1,017	-1.6%
74	Krakow	KRK	362,650	17.0%	39.1%	2,885	11.5%	45	14.9%
75	Thessaloniki	SKG	357,508	3.7%	19.3%				
76	Eindhoven	EIN	345,464	18.1%	36.3%	2,220	12.5%		
77	Riga	RIX	343,970	2.5%	16.6%	4,467	0.6%	977	0.3%
78	Turin	TRN	335,188	4.3%	18.7%	3,067	3.2%	32	-50.8%
79	Sevilla	SVQ	327,629	5.1%	22.1%	2,375	-4.9%	588	18.1%
80	Trondheim	TRD	323,821	-4.5%	3.2%	4,048	-3.3%	129	7.5%
81	Malta	MLA	298,540	25.1%	40.6%	2,321	21.5%	1,246	17.5%
82	Tenerife	TFN	296,624	-2.5%	15.3%	3,827	-2.2%	1,076	29.6%

			PASSENGERS			COMMERCIAL MOVEMENTS		FREIGHT	
			February			February		February	
CITY		CODE	2017/16		2017/15	2017/16		2017/16	
83	Bilbao	BIO	295,473	5.2%	16.2%	2,896	0.3%	234	8.8%
84	Stavanger	SVG	286,434	-6.4%	-11.4%	4,759	-7.4%	330	-6.4%
85	Novosibirsk	OVB	286,317	24.7%	32.7%	3,076	14.6%	1,559	4.2%
86	Hanover	HAJ	285,906	-6.7%	1.2%	3,267	-12.2%	917	30.4%
87	Belgrade	BEG	282,793	6.0%	6.7%	3,455	-3.4%	974	-21.8%
88	Larnaca	LCA	280,114	28.0%	55.1%	2,782	28.2%	2,282	10.2%
89	Palermo	PMO	279,064	-5.6%	18.6%	2,364	-6.9%	19	-44.1%
90	Bari	BRI	278,825	4.1%	15.0%	2,124	2.1%	20	-90.3%
91	Faro	FAO	278,342	24.5%	51.7%	2,077	21.0%	5	15.0%
92	Trabzon	TZX	255,376	2.3%	19.1%	1,707	7.2%	179	57.0%
93	Vilnius	VNO	255,327	13.3%	32.5%	2,775	5.3%	578	3.3%
94	Nürnberg	NUE	235,002	24.5%	17.8%	3,131	12.4%	682	20.1%
95	Salzburg	SZG	234,774	10.3%	12.2%	2,086	5.7%	19	0.0%
96	East Midlands	EMA	233,390	13.8%	14.9%	3,730	-0.6%	22,802	-1.3%
97	Aberdeen	ABZ	212,143	-3.4%	-16.2%	6,328	-7.2%	447	-15.3%
98	Luxembourg	LUX	208,989	14.6%	39.1%	4,232	4.9%	59,025	14.1%
99	Funchal	FNC	205,834	10.6%	26.3%	1,686	12.6%	201	-1.4%
100	Stockholm	BMA	194,156	-3.0%	6.7%	3,675	-4.6%		
101	Billund	BLL	188,464	5.4%	36.2%	2,462	-3.5%	5,023	5.1%
102	Cagliari	CAG	185,298	-2.5%	7.3%	1,355	-8.4%	120	0.8%
103	Treviso	TSF	185,197	0.9%	0.0%	1,110	-1.2%		
104	Tromsø	TOS	183,581	3.4%	15.3%	2,619	-0.7%	121	-5.6%
105	Katowice	KTW	178,298	10.3%	21.0%	1,569	6.0%	1,237	-12.3%
106	Wrocław	WRO	174,919	16.8%	25.2%	1,587	12.0%	164	-11.4%
107	Rostov	ROV	170,800	35.3%	32.7%	1,437	9.4%	274	-10.2%
108	Verona	VRN	161,482	6.2%	26.0%	1,487	0.3%	317	-17.9%
109	Cluj	CLJ	159,739	55.8%	82.4%	1,588	44.6%	205	32.5%
110	Malmö	MMX	157,948	-1.2%	15.0%	1,911	-2.9%	1,858	-27.5%
111	Zagreb	ZAG	154,361	1.2%	9.2%	2,310	-9.1%	348	-20.7%
112	Tbilisi	TBS	151,681	38.0%	69.4%	1,762	26.4%	2,858	141.6%
113	Tallinn	TLL	149,492	16.7%	21.9%	2,537	5.1%	526	-18.1%
114	Samara	KUF	148,528	13.3%	32.7%	790	-4.9%	199	13.0%
115	Ibiza	IBZ	142,176	10.5%	26.1%	1,700	2.0%	97	-8.1%
116	Southampton	SOU	140,545	14.8%	8.9%	2,838	15.1%	15	0.0%
117	Tirana	TIA	140,368	10.4%	26.4%	1,468	3.5%	126	7.8%
118	Bremen	BRE	139,622	-12.0%	-11.8%			55	-31.3%
119	Chisinau	KIV	138,027	17.9%	24.2%	1,615	25.9%	165	18.7%
120	Bodo	BOO	132,441	-1.9%	12.2%	2,797	-3.9%	95	7.8%
121	Cork	ORK	132,132	0.1%	9.5%	1,236	-6.2%	4	250.0%
122	Brindisi	BDS	129,674	-7.5%	-2.0%	917	-8.3%	0	-99.3%
123	Vladivostok	VVO	127,228	8.4%	26.1%	677	24.2%		
124	Kazan	KZN	125,284	23.0%	34.3%	902	2.6%	133	-17.2%
125	Timisoara	TSR	113,103	68.1%	88.9%	1,263	32.8%	278	-9.6%
126	Eilath	ETH	112,666	-0.4%	5.7%	1,153	1.7%		
127	Stockholm	NYO	108,549	-4.1%	19.0%	792	-9.0%	19	5.6%
128	Pristina	PRN	108,270	0.3%	22.6%	822	-4.2%	56	-6.0%
129	Skopje	SKP	105,392	3.0%	31.6%	928	-6.3%	161	-39.4%
130	Poznan	POZ	98,293	3.6%	39.1%	962	-5.4%	6	-12.9%
131	Bratislava	BTS	91,854	-4.8%	6.7%	913	-11.3%	1,719	-8.5%

			PASSENGERS			COMMERCIAL MOVEMENTS		FREIGHT	
			February			February		February	
CITY		CODE	2017/16		2017/15	2017/16		2017/16	
132	Ponta Delgada	PDL	91,769	11.0%	77.1%	1,096	21.1%	343	17.6%
133	Luleå	LLA	90,705	-1.5%	3.3%	866	-7.3%	44	0.0%
134	Chelyabinsk	CEK	90,446	1.1%	32.8%	385	-12.1%	213	11.8%
135	Ljubljana	LJU	89,995	15.4%	24.5%	1,632	9.0%	733	6.1%
136	Shannon	SNN	89,499	1.3%	17.6%	785	-1.1%	1,037	16.6%
137	Bodrum	BJV	81,069	3.4%	20.6%	524	0.0%	6	50.0%
138	Oulu	OUL	80,562	-2.8%	4.2%				
139	Umeå	UME	78,409	-3.9%	6.5%	1,325	-0.9%	30	-6.3%
140	Paphos	PFO	77,432	7.9%	9.4%	539	14.4%	21	133.3%
141	Trapani	TPS	76,077	-2.9%	0.0%	599	1.2%	1	0.0%
142	Heraklion	HER	74,901	14.1%	22.1%				
143	Iasi	IAS	73,783	55.8%	82.4%	793	28.9%	1	40.0%
144	Aalesund	AES	71,998	-4.8%	-8.0%	921	-10.5%	21	-6.9%
145	Kristiansand	KRS	71,797	-5.4%	-3.9%	1,206	-5.8%	30	-66.2%
146	Brest	BES	69,577	0.2%	2.6%	1,070	5.5%	271	68.3%
147	Menorca	MAH	67,748	6.2%	31.5%	1,056	-8.4%	116	9.6%
148	Memmingerberg	FMM	65,484	36.3%	71.7%	430	35.6%		
149	Chania	CHQ	65,411	-1.8%	11.4%				
150	Odessa	ODS	64,815	19.2%	55.3%	686	17.7%	38	-18.5%
151	Biarritz	BIQ	64,635	11.2%	12.5%	705	21.6%		
152	Graz	GRZ	62,138	3.1%	17.8%	1,016	0.2%	15	15.4%
153	Rovaniemi	RVN	60,655	10.8%	28.6%				
154	Volgograd	VOG	60,195	11.5%	21.5%	249	18.6%	54	-2.2%
155	Isle Of Man	IOM	60,060	-1.2%	12.4%	1,694	-16.9%	23	0.0%
156	Kaunas	KUN	54,111	11.5%	16.6%	545	20.0%	174	139.8%
157	Ostersund	OSD	52,737	6.2%	21.2%	709	-4.6%	8	0.0%
158	Rhodes	RHO	51,910	3.3%	23.1%				
159	Ajaccio	AJA	51,159	3.8%	7.8%			383	2.9%
160	Harstad	EVE	50,350	-1.1%	11.8%	638	-3.2%	44	-15.6%
161	Mugla	DLM	49,464	10.7%	45.6%	332	6.4%	2	-50.0%
162	Trieste	TRS	47,413	-2.0%	7.4%	619	-0.5%	3	-40.0%
163	Podgorica	TGD	46,738	18.8%	36.0%	311	6.9%	37	-11.9%
164	Pau	PUF	46,596	-3.9%	-0.9%	773	5.7%	6	-91.3%
165	Chambery	CMF	46,222	-8.5%	2.6%	1,443	9.3%		
166	Haugesund	HAU	44,439	-5.0%	-6.7%	476	-14.2%	18	14.2%
167	Olbia	OLB	42,995	13.0%	16.1%	419	2.7%	5	-24.3%
168	Sarajevo	SJJ	41,122	-3.4%	3.0%	592	-7.9%	466	352.4%
169	Kharkiv	HRK	40,012	49.9%	19.1%	388	22.0%	12	-71.8%
170	Tomsk	TOF	39,500	40.5%	26.1%	326	34.7%	125	5.0%
171	Girona	GRO	38,183	-24.4%	-19.8%	256	-37.3%	6	-41.6%
172	Astrakhan	ASF	36,224	-3.2%	32.8%	251	3.7%	55	12.9%
173	Muenster	FMO	36,148	-3.0%	-1.6%	614	-4.8%	0	-99.1%
174	Molde	MOL	35,607	-10.2%	4.2%	603	-7.9%	20	-18.8%
175	Bournemouth	BOH	33,830	15.3%	60.8%	226	-12.7%	2	-60.0%
176	Sibiu	SBZ	32,797	55.1%	74.5%	412	12.0%	1	-75.6%
177	Angelholm	AGH	31,012	-0.2%	11.5%	499	2.5%		
178	Kiruna	KRN	30,301	8.9%	4.9%	270	5.9%	7	0.0%
179	Santorini Thira	JTR	29,957	-12.2%	119.2%				
180	Varna	VAR	29,272	16.6%	47.0%	321	7.4%	7	-6.3%

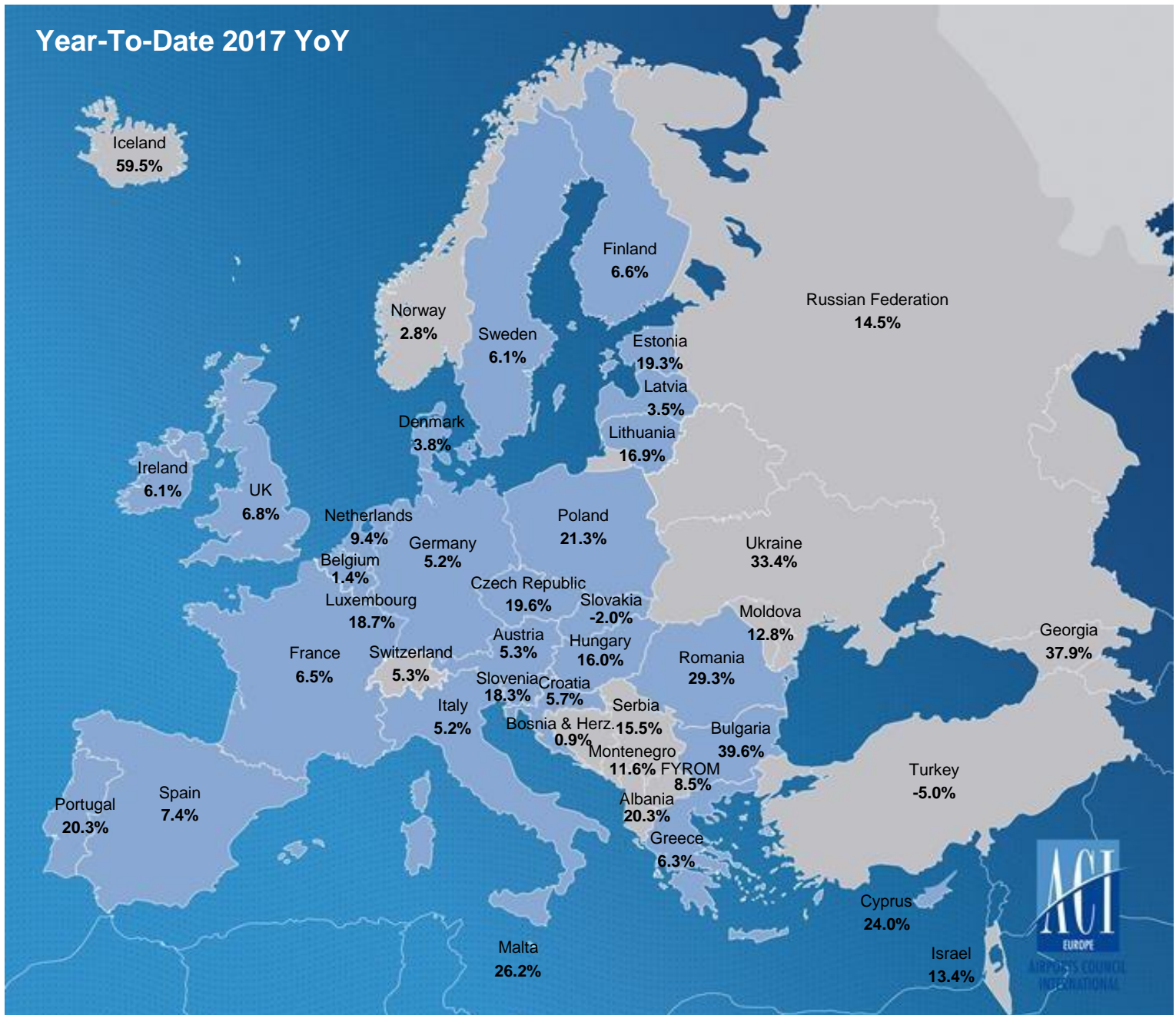
			PASSENGERS			COMMERCIAL MOVEMENTS		FREIGHT	
			February			February		February	
CITY		CODE	2017/16		2017/15	2017/16		2017/16	
181	Friedrichshafen	FDH	27,778	-16.3%	-16.3%	537	-3.2%		
182	Bacau	BCM	27,436	18.9%	-98.7%	254	27.0%		
183	Alta	ALF	26,640	-5.1%	12.5%	542	4.0%	50	15.8%
184	Visby	VBY	26,032	3.1%	16.4%	607	0.0%	6	-14.3%
185	Toulon	TLN	25,674	-9.1%	-4.6%	354	-10.4%		
186	Linz	LNZ	24,266	1.0%	-13.9%	475	0.6%	873	46.1%
187	Kirkenes	KKN	23,859	1.9%	15.0%	475	-4.2%	32	0.4%
188	Split	SPU	23,704	0.5%	2.7%	425	16.1%	11	-15.4%
189	Turku	TKU	23,675	-1.5%	9.6%				
190	Dubrovnik	DBV	22,813	0.9%	66.1%	290	-4.6%	12	-17.8%
191	Lublin	LUZ	22,801	-1.6%	39.1%	143	-13.9%		
192	Vaasa	VAA	22,140	-5.0%	-4.2%				
193	Nis	INI	21,988	354.4%	6.7%	93	287.5%		
194	Mytilene	MJT	20,779	-16.9%	22.2%				
195	Kristiansund	KSU	19,676	-16.8%	-26.9%	598	-19.9%	8	-14.1%
196	Kutaisi	KUT	19,665	71.1%	96.5%	158	2.6%		
197	Ronneby	RNB	19,004	2.1%	16.5%	338	-2.9%	1	-50.0%
198	Bardufoss	BDU	17,140	-13.2%	-3.8%	139	-27.2%	6	21.8%
199	Palanga	PLQ	16,032	61.5%	79.5%	207	29.4%		
200	Klagenfurt	KLU	15,211	-1.1%	1.1%	276	1.8%		
201	Ostend	OST	14,307	-11.8%	21.6%	204	-8.5%	1,443	-7.0%
202	Tivat	TIV	14,299	-0.9%	1.1%	101	-19.8%	1	-40.0%
203	Corfou	CFU	13,859	-5.5%	3.3%				
204	Limoges	LIG	13,833	-7.6%	-5.6%	270	-20.1%		
205	Tampere	TMP	13,802	6.4%	-30.6%				
206	Hammerfest	HFT	13,498	-15.9%	41.1%	762	-18.2%	16	-45.4%
207	Brno	BRQ	13,452	-6.8%	-16.3%	216	0.0%	299	-8.7%
208	Mikonos	JMK	12,747	113.3%	175.3%				
209	Svalbard	LYR	11,252	-0.6%	5.6%	178	-26.1%	18	-6.1%
210	Ostrava	OSR	11,168	38.1%	40.3%	256	-3.0%	191	388.7%
211	Floro	FRO	10,249	-24.6%	-29.5%	563	-31.3%	3	-11.7%
212	Kos	KGS	10,192	-2.9%	-2.2%				
213	Bronnoysund	BNN	9,764	5.4%	2.4%	541	5.5%	2	23.5%
214	Mo i Rana	MQN	9,697	-6.7%	28.0%	473	-4.4%	16	55.8%
215	Stokmarknes	SKN	9,096	2.4%	8.2%	424	-0.5%	4	8.5%
216	Leknes	LKN	8,855	3.3%	22.8%	371	-8.2%	4	-13.6%
217	Orsta	HOV	8,621	-5.6%	-2.9%	328	-10.9%	2	-32.3%
218	Bourgas	BOJ	8,342	-14.4%	-4.2%	101	-29.4%	854	3.1%
219	Vadso	VDS	8,286	6.6%	12.5%	506	-4.0%		
220	Sandnessjoen	SSJ	7,911	7.2%	10.4%	493	6.3%		
221	Mosjoen	MJF	6,828	-2.2%	15.6%	435	-6.3%		
222	Sogndal	SOG	6,752	-2.7%	9.4%	426	2.7%		
223	Forde	FDE	6,695	-2.0%	4.1%	304	-11.9%		
224	Liège	LGG	6,277	-54.8%	-26.7%	2,103	-6.7%	53,662	-2.2%
225	Oradea	OMR	5,960	111.0%	127.3%	117	14.7%		
226	Batumi	BUS	5,850	-5.9%	-7.7%	100	35.1%		
227	Ohrid	OHD	5,069	61.7%	532.0%	38	58.3%		
228	Zakynthos Island	ZTH	2,799	47.4%	120.9%				
229	Kefallinia	EFL	1,693	-25.8%	-0.4%				

			PASSENGERS			COMMERCIAL MOVEMENTS		FREIGHT	
			February			February		February	
CITY		CODE	2017/16		2017/15	2017/16		2017/16	
230	Bucharest	BBU	1,336	041.9%	821.4%	85	46.6%		
231	Zadar	ZAD	951	-36.5%	-49.7%	56	-39.1%		
232	Targu Mures	TGM	53	-99.8%	74.5%	14	-91.9%		
233	Maribor	MBX	43	-77.5%	-51.7%	2	-80.0%		
234	Foggia	FOG	31	-39.2%	-92.9%				
235	Arad	ARW	28	133.3%	-98.7%	6	0.0%		

TRAFFIC DEVELOPMENT (Year-To-Date February 2017)

	YTD 2017/2016	YTD 2017/2015	YTD 2017/2014
Total Passengers	7.1%	17.7%	22.7%
EU airports	7.7%	17.0%	23.6%
Non-EU airports	4.9%	11.0%	14.5%
Passengers International	8.8%	17.3%	23.3%
EU airports	9.2%	18.9%	26.2%
Non-EU airports	7.2%	10.0%	11.4%
Passengers Domestic	2.8%	11.7%	16.0%
EU airports	3.4%	10.8%	13.7%
Non-EU airports	2.0%	13.1%	19.7%
Freight	5.4%	10.1%	11.0%
EU airports	4.8%	8.6%	9.9%
Non-EU airports	9.1%	20.2%	18.2%
Movements	2.3%	6.7%	7.9%
EU airports	2.8%	7.7%	9.3%
Non-EU airports	1.0%	3.5%	3.5%
PAX + Freight Combined	2.5%	7.4%	8.1%
Cargo only	-1.5%	-1.4%	-1.9%

PASSENGER DEVELOPMENT EUROPEAN COUNTRIES (Year-To-Date 2017 YoY)



PASSENGER TRAFFIC GROWTH BY TRAFFIC CATEGORY (Year-To-Date 2017)

GROUP 1		GROUP 2		GROUP 3		GROUP 4	
Over 25 million pax		Between 10 and 25 million pax		Between 5 and 10 million pax		Less than 5 million pax	
2017/2016	2017/2015	2017/2016	2017/2015	2017/2016	2017/2015	2017/2016	2017/2015
4.5%	12.2%	9.0%	18.5%	10.5%	21.7%	9.8%	17.9%

			PASSENGERS		COMMERCIAL MOVEMENTS		FREIGHT		
			YTD February 2017		YTD February 2017		YTD February 2017		
	CITY	CODE	2017/16	2017/15	2017/16	2017/15	2017/16	2017/15	
1	London	LHR	11,010,811	3.0%	5.8%	71,997	-1.6%	251,212	4.4%
2	Paris	CDG	9,598,739	4.9%	6.5%	69,442	0.5%	294,837	-2.6%
3	Amsterdam	AMS	8,906,738	8.5%	21.5%	69,063	4.5%	266,622	7.2%
4	Frankfurt	FRA	8,251,852	1.4%	4.4%	65,025	-2.7%	312,519	4.2%
5	Istanbul	IST	8,054,214	-8.8%	-4.1%	61,493	-9.7%	126,674	7.9%
6	Madrid	MAD	7,424,587	6.4%	20.8%	54,974	-1.0%	67,234	7.4%
7	Munich	MUC	5,871,170	5.2%	8.5%	56,064	3.6%	53,246	5.2%
8	London	LGW	5,757,309	11.0%	19.2%	38,970	5.3%	11,999	10.5%
9	Barcelona	BCN	5,600,812	8.0%	26.8%	39,462	1.9%	21,012	7.1%
10	Moscow	SVO	5,250,778	17.3%	27.8%	42,918	9.0%	27,888	29.7%
11	Rome	FCO	5,162,451	1.6%	7.4%	41,150	-6.0%	19,720	-0.2%
12	Paris	ORY	4,546,435	7.6%	11.6%	33,681	0.3%	12,940	-28.0%
13	Istanbul	SAW	4,207,422	-5.0%	15.6%	30,764	-7.3%	9,117	5.1%
14	Copenhagen	CPH	3,954,930	3.8%	18.9%	36,878	-3.5%		
15	Moscow	DME	3,907,113	2.7%	5.1%	32,341	-3.2%	16,941	8.9%
16	Zürich	ZRH	3,834,767	7.8%	12.4%	37,189	0.3%	51,116	11.7%
17	Oslo	OSL	3,707,012	7.1%	13.0%	35,593	1.5%	18,494	2.7%
18	Dublin	DUB	3,647,951	6.4%	24.6%	28,647	1.8%	20,162	-0.7%
19	Stockholm	ARN	3,572,701	8.8%	16.0%	34,121	5.3%	13,597	28.7%
20	London	STN	3,398,921	1.5%	15.0%	24,266	-0.5%	18,164	0.6%
21	Manchester	MAN	3,349,291	14.7%	24.9%	25,895	12.1%	15,733	12.5%
22	Lisbon	LIS	3,274,559	20.8%	31.4%	26,934	10.5%	16,693	23.6%
23	Brussels	BRU	3,094,052	1.5%	11.1%	31,562	-1.1%	81,192	16.2%
24	Düsseldorf	DUS	3,068,082	12.8%	15.5%	29,953	8.5%	15,201	22.0%
25	Vienna	VIE	2,837,521	5.5%	8.2%	29,962	-2.4%	28,789	-0.5%
26	Geneva	GVA	2,829,365	2.8%	11.1%	25,206	-1.3%	8,767	28.2%
27	Milan	MLX	2,802,909	11.6%	17.4%	23,237	2.8%	83,769	13.1%
28	Berlin	TXL	2,770,212	1.0%	3.5%	25,622	-2.9%	6,415	17.3%
29	Helsinki	HEL	2,665,221	6.5%	14.9%	26,185	2.1%	19,261	-24.4%
30	Athens	ATH	2,329,419	7.8%	23.9%	21,080	1.4%	11,103	-4.4%
31	Tel-Aviv	TLV	2,262,195	14.9%	26.4%	15,902	9.9%	50,071	3.8%
32	Hamburg	HAM	2,177,031	9.1%	13.4%	20,723	3.3%	5,399	3.6%
33	Gran Canaria	LPA	2,158,289	1.9%	13.9%	18,138	-0.3%	2,815	-3.9%

			PASSENGERS			COMMERCIAL MOVEMENTS		FREIGHT	
			YTD February2017			YTD February2017		YTD February2017	
	CITY	CODE	2017/16		2017/15	2017/16		2017/16	
34	Ankara	ESB	2,035,469	5.5%	11.5%	14,879	3.1%	1,601	-36.5%
35	St Petersburg	LED	1,915,839	28.9%	19.3%	20,178	20.4%	3,359	11.3%
36	Warsaw	WAW	1,901,751	28.5%	39.4%	22,461	13.0%	11,741	28.5%
37	Tenerife	TFS	1,877,452	7.9%	18.5%	11,628	5.8%	496	0.8%
38	Berlin	SXF	1,811,074	21.0%	76.3%	13,909	16.2%	1,230	14.4%
39	Málaga	AGP	1,778,621	16.7%	35.0%	13,208	10.0%	333	2.5%
40	Izmir	ADB	1,738,682	-1.0%	4.3%	11,411	2.0%	2,168	-36.8%
41	Prague	PRG	1,673,203	19.7%	36.6%	16,538	7.5%	10,535	31.2%
42	Milan	BGY	1,666,463	8.2%	19.4%	11,628	5.0%	18,521	4.5%
43	Bucharest	OTP	1,656,667	21.3%	43.3%	16,292	11.0%	4,553	6.8%
44	Budapest	BUD	1,605,280	16.0%	31.1%	12,915	6.7%	11,894	22.4%
45	Birmingham	BHX	1,584,430	13.8%	27.6%	15,110	10.6%	6,308	113.2%
46	Cologne	CGN	1,449,765	4.4%	37.0%	17,362	1.6%	121,166	4.5%
47	Milan	LIN	1,391,820	4.7%	8.9%	14,902	-0.4%	2,073	7.4%
48	Alicante	ALC	1,370,338	13.9%	36.8%	10,405	14.9%	990	16.1%
49	Lyon	LYS	1,364,427	9.8%	15.8%	16,204	3.5%	9,161	8.1%
50	Palma De Mallorca	PMI	1,362,796	3.0%	14.5%	13,070	2.4%	1,358	-3.9%
51	Porto	OPO	1,356,941	20.9%	42.2%	11,703	15.6%	5,482	12.8%
52	Kiev	KBP	1,310,351	33.2%	238.5%	11,695	24.9%	4,775	22.0%
53	Toulouse	TLS	1,277,312	15.6%	18.8%	13,356	7.2%	12,465	15.2%
54	Antalya	AYT	1,271,990	-6.2%	-11.8%	9,206	-0.3%	1,266	18.0%
55	Glasgow	GLA	1,201,309	5.9%	20.5%	12,101	6.1%	1,664	1.8%
56	Stuttgart	STR	1,179,765	-1.2%	6.9%	12,811	-6.4%	4,150	27.8%
57	Marseille	MRS	1,141,856	5.0%	9.3%	13,289	0.8%	9,049	1.3%
58	Venice	VCE	1,098,405	7.5%	18.0%	10,252	3.5%	6,817	2.0%
59	Lanzarote	ACE	1,068,550	8.8%	19.6%	8,520	10.0%	286	6.7%
60	Bologna	BLQ	1,021,754	3.4%	20.8%	9,017	-1.2%	6,437	11.3%
61	Keflavik	KEF	980,743	59.5%	112.6%	6,624	43.8%	6,888	-9.7%
62	Charleroi	CRL	980,478	3.1%	13.2%	6,392	0.0%	15	7.1%
63	Bristol	BRS	943,795	12.1%	27.1%	8,019	9.8%		
64	Sofia	SOF	925,180	44.2%	64.7%	7,979	27.7%	2,682	2.8%
65	Rome	CIA	910,449	4.2%	12.8%	5,783	1.2%	2,573	3.1%
66	Basel	BSL	896,891	2.6%	10.3%	9,210	-0.5%	4,849	28.9%
67	Göteborg	GOT	894,312	3.2%	11.8%	9,532	-6.3%	2,129	23.0%
68	Fuerteventura	FUE	892,464	4.3%	21.8%	6,909	4.3%	147	-2.0%
69	Adana	ADA	852,140	-3.4%	5.5%	6,244	-1.4%	634	-33.1%
70	Bergen	BGO	798,021	-1.8%	-0.3%	12,153	-6.3%	503	-6.0%
71	Bordeaux	BOD	749,220	9.3%	16.2%	7,462	4.1%	1,645	1.9%
72	Valencia	VLC	730,261	15.0%	34.0%	6,669	-4.1%	2,049	4.1%
73	Krakow	KRK	729,586	18.9%	39.6%	6,038	15.3%	96	18.5%
74	Thessaloniki	SKG	722,769	3.8%	14.7%				
75	Naples	NAP	717,373	10.8%	12.1%	6,480	4.1%	1,073	14.0%
76	Riga	RIX	713,636	3.5%	15.8%	9,340	0.3%	1,595	-16.7%
77	Eindhoven	EIN	692,212	21.9%	38.2%	4,575	16.6%		
78	Turin	TRN	662,111	6.9%	19.2%	6,253	3.8%	63	-45.7%
79	Sevilla	SVQ	648,009	8.2%	25.0%	4,824	-2.9%	1,084	15.9%
80	Trondheim	TRD	634,369	-1.5%	3.9%	8,313	-0.1%	262	9.2%
81	Belgrade	BEG	612,913	9.9%	6.8%	7,507	0.1%	2,040	-4.0%
82	Tenerife	TFN	610,040	0.4%	17.4%	7,897	-1.1%	2,006	16.2%

			PASSENGERS			COMMERCIAL MOVEMENTS		FREIGHT	
			YTD February2017			YTD February2017		YTD February2017	
CITY	CODE		2017/16	2017/15		2017/16		2017/16	
83	Novosibirsk	OVB	607,282	27.3%	28.4%	6,486	17.7%	2,759	4.5%
84	Malta	MLA	601,620	26.2%	41.8%	4,890	21.9%	2,441	15.1%
85	Palermo	PMO	591,114	-1.4%	18.0%	5,005	-4.9%	42	-36.4%
86	Hanover	HAJ	586,628	-2.6%	2.5%	6,776	-6.1%	1,595	19.4%
87	Larnaca	LCA	580,130	30.7%	52.5%	5,776	29.0%	4,351	12.4%
88	Bilbao	BIO	579,711	7.2%	19.7%	5,775	2.0%	460	7.2%
89	Stavanger	SVG	570,953	-4.4%	-8.4%	9,720	-5.4%	624	-16.4%
90	Bari	BRI	561,586	6.4%	14.7%	4,433	4.3%	42	-89.5%
91	Vilnius	VNO	535,272	15.6%	35.0%	5,865	7.6%	1,222	15.8%
92	Trabzon	TZX	515,577	2.2%	16.1%	3,388	5.6%	335	60.3%
93	Faro	FAO	496,937	24.9%	47.9%	3,824	19.4%	11	37.5%
94	East Midlands	EMA	452,762	14.1%	17.0%	7,594	2.6%	47,125	-0.5%
95	Salzburg	SZG	450,996	4.1%	4.3%	4,125	1.4%	34	-2.9%
96	Nürnberg	NUE	449,114	22.8%	15.7%	6,145	12.2%	1,133	24.8%
97	Aberdeen	ABZ	419,158	-2.6%	-17.1%	12,756	-4.6%	919	-9.6%
98	Funchal	FNC	418,872	13.9%	27.1%	3,705	16.7%	399	-8.9%
99	Luxembourg	LUX	414,109	18.7%	41.3%	8,678	7.4%	121,870	11.4%
100	Cagliari	CAG	396,187	1.9%	9.4%	2,958	-5.8%	226	-28.9%
101	Treviso	TSF	382,159	4.7%	07850.0%	2,350	1.5%		
102	Stockholm	BMA	373,909	0.6%	5.5%	7,133	-0.3%		
103	Tromsoe	TOS	363,676	5.6%	17.0%	5,411	0.9%	260	-0.4%
104	Katowice	KTW	362,992	8.5%	24.1%	3,219	4.3%	2,377	-0.1%
105	Rostov	ROV	359,668	36.8%	33300.0%	3,073	10.3%	648	20.9%
106	Wroclaw	WRO	354,848	19.1%	27.0%	3,328	16.5%	364	-7.4%
107	Verona	VRN	339,700	7.4%	18.4%	3,180	-1.7%	532	-22.2%
108	Tirana	TIA	332,127	20.3%	34.5%	3,222	8.3%	251	6.4%
109	Cluj	CLJ	331,439	59.3%	84.9%	3,327	52.8%	397	41.8%
110	Zagreb	ZAG	322,717	4.9%	10.7%	4,887	-5.6%	721	-10.2%
111	Tbilisi	TBS	314,968	34.4%	61.5%	3,714	26.8%	5,638	142.2%
112	Malmö	MMX	313,485	0.6%	13.8%	3,820	-0.7%	3,933	-19.9%
113	Chisinau	KIV	311,620	12.8%	18.5%	3,445	19.5%	313	22.7%
114	Samara	KUF	308,101	14.1%	04950.0%	1,639	-2.8%	373	14.4%
115	Tallinn	TLL	304,881	19.3%	21.6%	5,320	10.6%	1,468	27.3%
116	Ibiza	IBZ	282,614	10.7%	29.0%	3,505	0.1%	191	-6.8%
117	Bremen	BRE	277,106	-10.5%	-12.5%			100	-16.7%
118	Southampton	SOU	266,267	15.2%	11.0%	5,653	16.9%	29	-6.5%
119	Cork	ORK	264,086	2.7%	11.0%	2,536	-5.2%	5	66.7%
120	Vladivostok	VVO	262,876	12.3%	43700.0%	1,362	19.7%		
121	Brindisi	BDS	259,538	-4.9%	-1.9%	1,915	-6.1%		
122	Bodo	BOO	258,949	1.9%	11.8%	5,773	0.0%	181	7.1%
123	Kazan	KZN	256,980	24.1%	35.8%	1,852	4.4%	269	-12.1%
124	Pristina	PRN	231,114	0.4%	17.4%	1,816	-3.3%	114	-11.6%
125	Skopje	SKP	228,510	7.9%	35.7%	2,039	-0.9%	318	-25.4%
126	Timisoara	TSR	225,618	71.1%	85.8%	2,633	47.8%	614	2.8%
127	Stockholm	NYO	219,789	-2.0%	19.1%	1,668	-6.6%	40	8.1%
128	Eilath	ETH	213,501	-0.7%	0.7%	2,247	-1.8%		
129	Poznan	POZ	198,645	4.6%	32150.0%	1,980	-2.9%	14	-6.7%
130	Bratislava	BTS	190,570	-2.0%	28400.0%	1,912	-6.4%	3,541	2.6%
131	Shannon	SNN	189,256	5.4%	20.8%	1,669	1.6%	2,432	37.2%

			PASSENGERS			COMMERCIAL MOVEMENTS		FREIGHT	
			YTD February2017			YTD February2017		YTD February2017	
CITY	CODE		2017/16		2017/15	2017/16		2017/16	
132	Chelyabinsk	CEK	186,537	3.0%	26750.0%	795	-8.1%	369	10.5%
133	Ponta Delgada	PDL	185,775	11.8%	73.1%	2,286	21.2%	645	10.4%
134	Ljubljana	LJU	179,391	18.4%	23.4%	3,403	12.9%	1,481	9.8%
135	Luleå	LLA	177,439	1.0%	6.0%	1,684	-5.4%	89	15.6%
136	Bodrum	BJV	163,899	1.4%	16.3%	1,076	-2.2%	14	16.7%
137	Oulu	OUL	159,753	2.3%	8.1%				
138	Trapani	TPS	157,792	1.5%	107.4%	1,260	2.9%		
139	Umeå	UME	155,466	-0.4%	6.8%	2,593	4.3%	60	1.7%
140	Heraklion	HER	152,288	14.8%	16.8%				
141	Iasi	IAS	150,738	68.9%	36800.0%	1,656	37.5%		
142	Paphos	PFO	150,013	3.6%	4.0%	1,070	8.6%	122	510.0%
143	Kristiansand	KRS	144,233	-2.4%	-3.8%	2,451	-4.6%	55	-55.3%
144	Aalesund	AES	141,162	-3.7%	-7.3%	1,871	-5.5%	44	-15.4%
145	Odessa	ODS	140,617	27.1%	30750.0%	1,513	35.7%	81	-2.4%
146	Memmingerberg	FMM	140,519	40.6%	73.6%	928	37.9%		
147	Brest	BES	139,550	1.8%	3.9%	2,182	7.5%	560	16.2%
148	Chania	CHQ	132,981	-1.5%	10.6%				
149	Biarritz	BIQ	128,811	14.3%	15.7%	1,434	26.5%		
150	Menorca	MAH	128,080	8.9%	31.8%	2,129	-4.7%	226	18.9%
151	Volgograd	VOG	126,031	8.1%	34.3%	510	11.6%	103	8.4%
152	Rovaniemi	RVN	123,884	18.1%	33.0%				
153	Graz	GRZ	120,680	7.0%	20.2%	2,041	6.3%	28	21.7%
154	Isle Of Man	IOM	114,106	0.7%	13.0%	3,119	-22.6%	47	-19.0%
155	Kaunas	KUN	112,549	11.7%	27350.0%	1,144	22.9%	175	066.7%
156	Rhodes	RHO	107,138	3.5%	17.9%				
157	Ajaccio	AJA	106,159	5.3%	10.1%			822	7.9%
158	Mugla	DLM	99,998	8.7%	44.8%	673	4.8%	8	60.0%
159	Trieste	TRS	98,274	6.4%	12.9%	1,271	6.3%	5	-50.0%
160	Podgorica	TGD	97,537	21.2%	32.4%	1,031	9.8%	76	-7.3%
161	Ostersund	OSD	97,019	10.1%	23.7%	1,329	-0.7%	17	13.3%
162	Harstad	EVE	96,230	1.0%	9.9%	1,321	1.3%	72	-13.3%
163	Pau	PUF	92,661	-1.4%	0.4%	1,523	8.0%	61	-31.5%
164	Chambery	CMF	92,437	-20.4%	46.1%	2,808	9.3%		
165	Olbia	OLB	88,218	14.1%	10800.0%	884	5.0%	12	-20.0%
166	Haugesund	HAU	87,709	-1.1%	-4.4%	968	-12.2%	34	3.0%
167	Kharkiv	HRK	87,477	48.4%	73750.0%	830	28.9%	30	-55.2%
168	Sarajevo	SJJ	84,499	0.9%	1.1%	1,224	-2.3%	559	171.4%
169	Tomsk	TOF	81,521	37.6%	24.3%	654	34.6%	231	14.9%
170	Girona	GRO	77,925	-19.6%	-18.8%	534	-30.6%	7	-36.4%
171	Astrakhan	ASF	73,627	-0.5%	32.0%	493	2.3%	104	5.1%
172	Molde	MOL	71,168	-4.0%	5.7%	1,233	-1.8%	43	-6.5%
173	Muenster	FMO	69,883	-0.5%	-0.9%	1,191	-0.8%	5	-66.7%
174	Bournemouth	BOH	66,836	13.4%	56.7%	451	-18.7%	3	-50.0%
175	Sibiu	SBZ	65,577	62.0%	72.1%	835	25.9%	2	-66.7%
176	Angelholm	AGH	60,234	6.4%	11.5%	1,006	9.0%		
177	Varna	VAR	58,092	9.1%	36.7%	643	5.4%	104	700.0%
178	Santorini Thira	JTR	58,067	-6.0%	131.4%				
179	Bacau	BCM	57,709	23.7%	35350.0%	528	28.5%		
180	Kiruna	KRN	57,085	14.0%	9.9%	529	14.0%	13	8.3%

			PASSENGERS			COMMERCIAL MOVEMENTS		FREIGHT	
			YTD February2017			YTD February2017		YTD February2017	
CITY	CODE		2017/16		2017/15	2017/16		2017/16	
181	Split	SPU	53,866	9.4%	13.7%	937	23.3%	31	10.7%
182	Friedrichshafen	FDH	53,092	-11.3%	-14.0%	1,134	14.1%		
183	Toulon	TLN	53,064	-6.7%	-2.4%	782	-3.3%		
184	Alta	ALF	52,266	1.7%	13.4%	1,104	6.7%	84	20.0%
185	Visby	VBY	50,323	7.1%	15.3%	1,171	2.0%	12	-7.7%
186	Turku	TKU	47,841	4.5%	13.3%				
187	Lublin	LUZ	47,386	-2.8%	89200.0%	306	-15.0%		
188	Kirkenes	KKN	45,894	7.0%	13.3%	979	-0.7%	69	21.1%
189	Linz	LNZ	45,680	0.5%	-16.5%	933	0.9%	1,636	31.6%
190	Kutaisi	KUT	45,480	100.2%	116.7%	316	17.0%		
191	Vaasa	VAA	43,775	-0.2%	-2.1%				
192	Nis	INI	42,681	339.1%	33950.0%	182	304.4%	361	916.7%
193	Dubrovnik	DBV	42,142	10.1%	43.0%	596	12.9%	24	-14.3%
194	Mytilene	MJT	41,538	-16.5%	8.8%				
195	Kristiansund	KSU	40,184	-12.1%	-15.9%	1,271	-16.2%	16	-5.9%
196	Ronneby	RNB	36,353	8.7%	20.2%	635	-2.2%	2	-33.3%
197	Bardufoss	BDU	34,570	-5.9%	3.4%	301	-20.4%	12	9.1%
198	Palanga	PLQ	34,269	71.7%	87.6%	448	34.5%		
199	Klagenfurt	KLU	29,619	-1.3%	-2.8%	565	3.3%		
200	Limoges	LIG	29,123	-2.7%	1.6%	587	-9.4%		
201	Tivat	TIV	28,986	-11.8%	-16.2%	339	-16.1%		
202	Corfou	CFU	28,935	-0.6%	1.7%				
203	Brno	BRQ	28,758	0.7%	-9.4%	448	6.2%	549	6.0%
204	Ostend	OST	27,676	-8.4%	27.2%	411	-9.9%	3,201	-2.0%
205	Hammerfest	HFT	26,558	-13.6%	39.6%	1,536	-17.2%	34	-32.0%
206	Tampere	TMP	26,285	8.9%	-34.7%				
207	Ostrava	OSR	22,993	39.5%	54.9%	531	1.5%	197	328.3%
208	Mikonos	JMK	22,175	99.6%	148.5%				
209	Kos	KGS	20,900	-4.0%	-6.6%				
210	Floro	FRO	20,820	-22.0%	-17.8%	1,168	-29.3%	7	0.0%
211	Svalbard	LYR	19,858	2.3%	6.1%	347	-18.9%	35	-12.5%
212	Bronnoysund	BNN	19,764	10.7%	15.3%	1,145	7.1%	4	33.3%
213	Mo i Rana	MQN	18,933	-5.2%	21.6%	1,000	-2.0%	28	33.3%
214	Bourgas	BOJ	18,848	-17.2%	-9.6%	225	-27.2%	2,498	11.4%
215	Stokmarknes	SKN	18,041	2.1%	6.8%	880	3.0%	7	0.0%
216	Orsta	HOV	17,174	-5.2%	-2.5%	683	-11.3%	4	-33.3%
217	Leknes	LKN	17,124	8.4%	17.6%	758	-4.8%	7	-12.5%
218	Vadso	VDS	16,478	7.7%	9.2%	1,049	-2.1%		
219	Sandnessjoen	SSJ	15,623	12.5%	23.8%	1,025	3.7%		
220	Sogndal	SOG	13,838	0.1%	14.5%	880	1.1%		
221	Forde	FDE	13,224	1.1%	5.8%	642	-8.5%		
222	Mosjoen	MJF	12,678	-5.9%	5.8%	868	-6.4%		
223	Liège	LGG	12,501	-54.2%	-22.2%	4,265	-2.4%	107,483	1.4%
224	Oradea	OMR	10,881	126.4%	127.2%	236	34.9%		
225	Batumi	BUS	10,852	-11.3%	-21.4%	180	4.7%		
226	Ohrid	OHD	9,495	23.6%	207.1%	72	5.9%		
227	Zakynthos Island	ZTH	5,714	65.9%	102.9%				
228	Kefallinia	EFL	3,487	-20.2%	-10.8%				
229	Bucharest	BBU	2,340	546.4%	828.6%	177	40.5%		

			PASSENGERS			COMMERCIAL MOVEMENTS		FREIGHT	
			YTD February2017			YTD February2017		YTD February2017	
CITY	CODE		2017/16		2017/15	2017/16		2017/16	
230	Zadar	ZAD	2,325	-25.0%	-38.7%	140	-22.2%		
231	Maribor	MBX	409	6.2%	354.4%	14	-50.0%		
232	Targu Mures	TGM	78	-99.8%	3800.0%	18	-95.1%		
233	Foggia	FOG	42	-58.4%	-94.9%				

ФОРМУЛИРОВКИ

Пассажиры

Прибыльные или неприбыльные пассажиры, прибывающие или вылетающие на коммерческих самолётах или вертолётах на запланированные или незапланированные рейсы.

Местные

Перевозка (пассажиров или грузов) выполняемая между аэропортами, расположенными в пределах одной страны или территории.

Международные

Перевозка (пассажиров или грузов) выполняемая между назначенными аэропортами, расположенными в другой стране или территории.

Грузы

Грузы это любая собственность, перевозимая на самолётах отличающаяся от почты, хранилищ и багажа.

Передвижение/Движение самолёта

Передвижение это посадка или взлёт самолёта или вертолёта в аэропорту по расписанию или без.

Только грузы

Передвижение самолётов или вертолётов для доставки коммерческих грузов и/или почты, но не пассажиров (исключая воздушное такси и деловые полёты).

Комбинированные пассажирские и грузовые полёты

Передвижение самолётов или вертолётов для доставки коммерческих грузов и/или почты, включая перевозку пассажиров (исключая воздушное такси и деловые полёты).

Географический охват

Европа

Включает все страны и территории на европейском континенте.

Евросоюз

Включает все аэропорты, находящиеся в 28 странах - членах европейского союза.

Неевропейские регионы

Включает все европейские страны, не являющиеся членами Европейского союза. В данный момент в неевропейские регионы входят: Албания, Беларусь, Босния и Герцеговина, Бывшая Югославская республика Македония, Грузия, Исландия, Израиль, Черногория, Норвегия, Российская Федерация, Сербия, Швейцария, Турция и Украина.





Airports Council International has been tracking airport traffic data for over 25 years. As part of that, here in Europe ACI EUROPE has published a dedicated airport traffic report every month for over 10 years. The data available comprises the most comprehensive reporting of passenger traffic figures available (including the network, low cost, charter and other airlines) as well as freight figures and aircraft movements. The report also provides insights into the average traffic performance in the various countries in continental Europe and a breakdown of the average growth in our 4 traffic categories for airports).

ACI EUROPE is the European region of Airports Council International (ACI), the only worldwide professional association of airport operators. ACI EUROPE represents close to **500 airports** in 45 European countries. In 2015, our member airports handled over 90% of commercial air traffic in Europe, welcoming more than **1.9 billion passengers, 18.9 million tonnes of freight** and **22.8 million aircraft movements**. These airports contribute to the employment of **12.3 million people**, generating **€675 billion** each year (**4.1%**) of GDP in Europe.

EVERY FLIGHT BEGINS AT THE AIRPORT.

www.aci-europe.org

Twitter: @ACI_EUROPE

Produced by ACI EUROPE

© Copyright ACI EUROPE 2017